



**3/351 President Avenue GYMEA NSW**

2 1 1

This spacious 2 bedroom unit is within walking distance to Gymea shops, schools and transport, it offers two good sized bedrooms both with built-in wardrobes and balcony access, separate living and dining areas with split system air conditioning, gas bayonet for heating, open plan kitchen with dishwasher & gas cooking, modern bathroom with separate spa bath and shower. The property features floorboards through the living and dining areas, carpeted bedrooms, and a single lock-up garage.

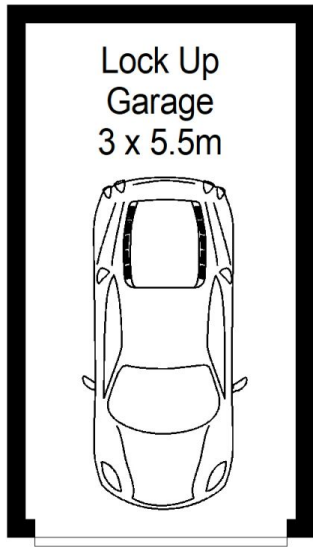
**View :** <https://www.jreproperty.com.au/sale/nsw/sutherland/gymea/residential/apartment/7489060>



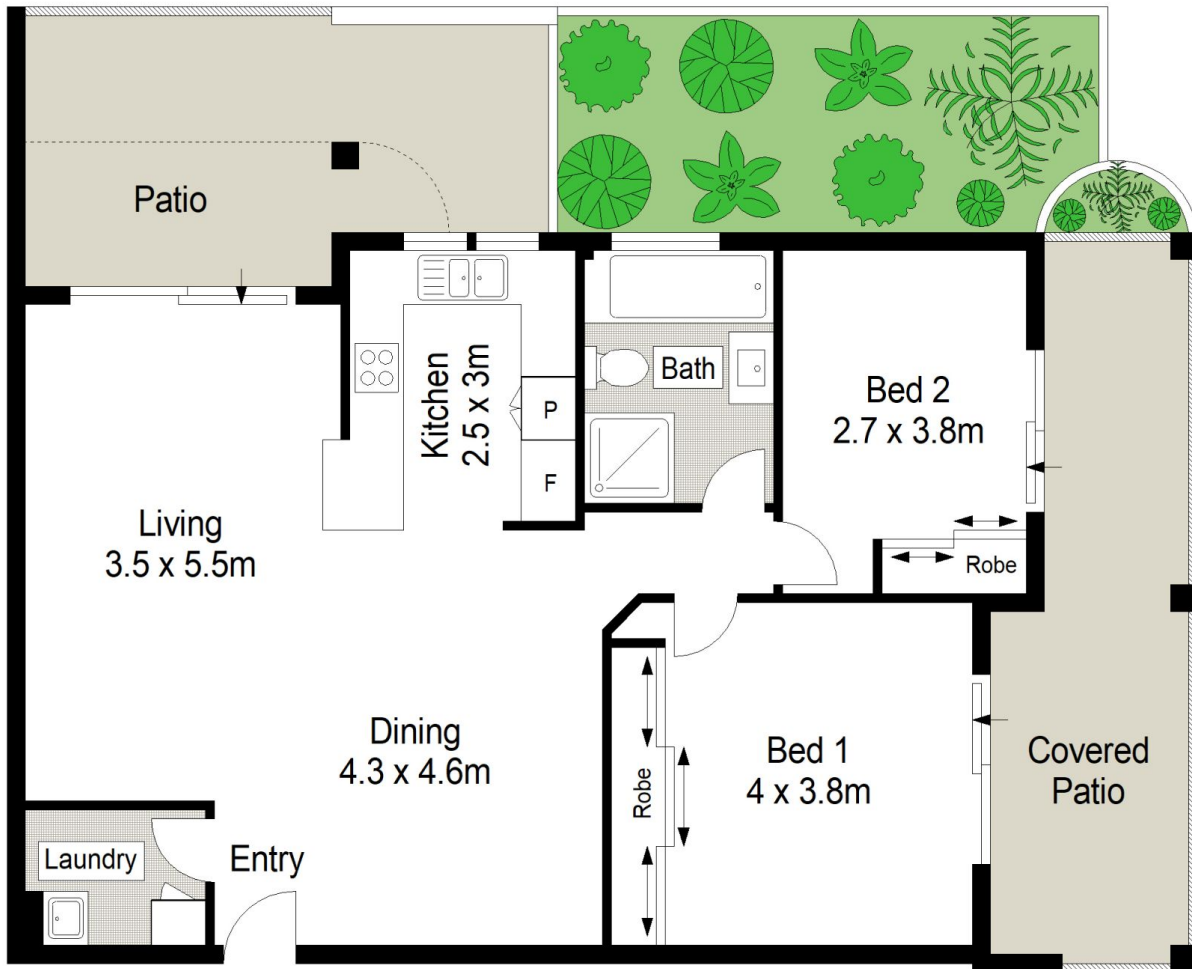
**Dion Moon**  
02 9540 2222

Inspection: As the property is currently tenanted appointments are only available on Saturday.

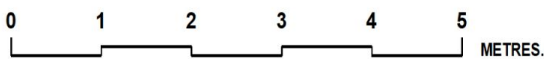
- Rates (approx):
- \* Strata: \$862p/q
  - \* Council: \$342p/q
  - \* Water: \$145p/q



**BASEMENT**



**GROUND FLOOR**



Scale in metres. Indicative only. Dimensions are approximate. All information contained herein is gathered from sources we believe to be reliable. However we cannot guarantee its accuracy and interested persons should rely on their own enquiries.

3/351 President Ave, Gymea

**CENTURY 21.**  
Jeffree Real Estate