

38 Bligh Street KIRRAWEE NSW

4 2 2

On a lovely tree-lined street, this classic brick family home marries traditional charm and modern style combined with a thoughtful layout that offers opportunity to live in now and renovate later whilst enjoying an exceptional home in the family-friendly neighborhood that is Kirrawee.

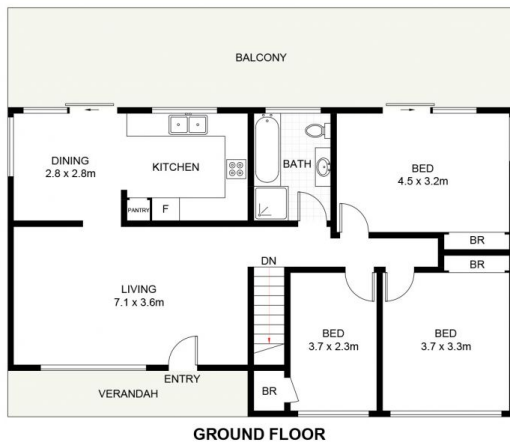
From its north-facing front garden, the residence invites you from the front verandah into the main living area with its neutral aesthetics, modern downlights and glorious foundation of rich, dark chocolate stained hardwood flooring. From this point, you can see the scope for future plans with kitchen and dining close by featuring a light-filled meals area with sliding doors to the rear balcony with stunning views of the Royal National Park and an updated kitchen with subway tile, custom cabinetry and

Type : House
Land Size : 581.7 sqm
View : <https://www.jreproperty.com.au/sale/nsw/sutherlandland/kirrawee/residential/house/7489061>

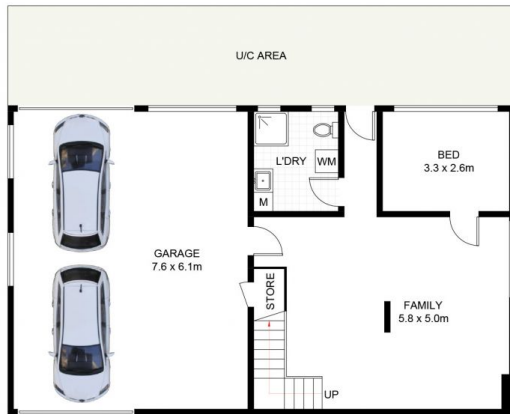


Trent Jeffree
02 9540 2222

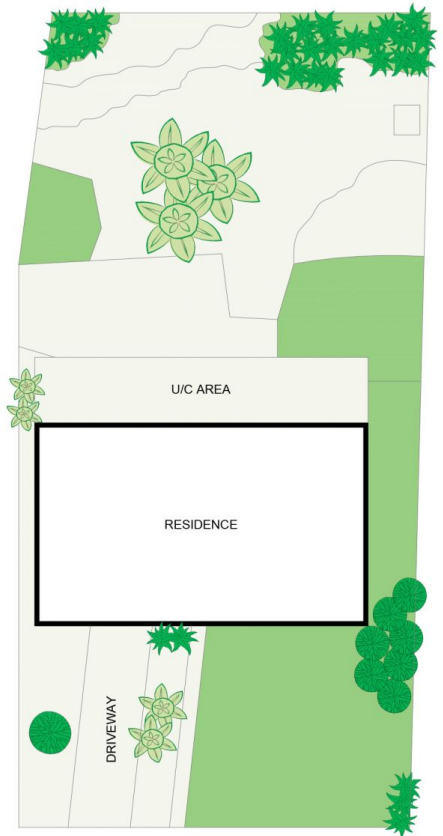
[For full version visit the website](https://www.jreproperty.com.au)



GROUND FLOOR



BASEMENT



SITE PLAN
(NOT TO SCALE)



38 Bligh Street, Kirrawee

DISCLAIMER: PLANS SHOWN ARE FOR PRESENTATION PURPOSES AND ARE NOT PART OF ANY LEGAL DOCUMENT. ALL MEASUREMENTS AND FIGURES ARE APPROXIMATE.