



43 Alkaringa Road GYMEA BAY NSW

4 🛏 3 🚿 2 🚗

Commanding an elevated street presence on one of Gymea Bay's most tightly held cul de sacs, this meticulously maintained and excellently presented residence offers exemplary family living, mere moments from the area's popular attractions.

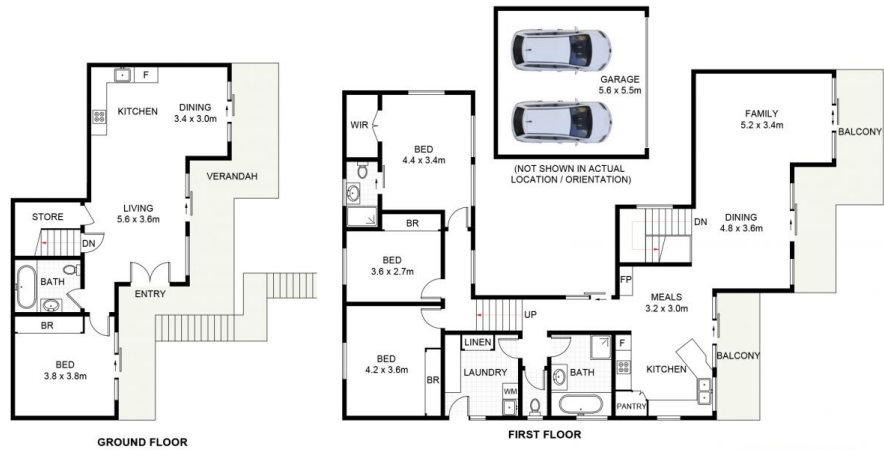
Expertly designed to take in the surrounding bushland views from multiple vantage points, the ground floor level dedicates its expansive floorplan to self-contained accommodation in style. Comprising a double bedroom, full bathroom, spacious living and dining and open plan kitchen that opens out to the full-length balcony perfect for multi-generational living, teenage/young adult accommodation or for home business/office opportunities.

Type : House
Land Size : 523.6 sqm
View : <https://www.jreproperty.com.au/sale/nsw/sutherland/gymea-bay/residential/house/7489067>



Luke Jeffree
02 9540 2222

[For full version visit the website](https://www.jreproperty.com.au)



GROUND FLOOR

FIRST FLOOR



SITE PLAN
(NOT TO SCALE)



43 Alkaringa Road, Gymea Bay

DISCLAIMER: PLANS SHOWN ARE FOR PRESENTATION PURPOSES AND ARE NOT PART OF ANY LEGAL DOCUMENT. ALL MEASUREMENTS AND FIGURES ARE APPROXIMATE.