



2/25-27 Barraran Street GYMEA BAY NSW

3 2 2

Beautifully appointed throughout, this stunning contemporary home offers families, downsizers and investors alike a fantastic opportunity across two levels in an exclusive boutique complex.

Set amongst an exquisite verdant outlook with superior space and seclusion. An alluring open plan living and dining underpinned by seamless tiles that extend beyond the floorplan into separate alfresco entertaining areas.

Immaculately maintained and beautifully presented, the residence showcases a sizeable kitchen featuring waterfall stone benchtops, premium appliances and a contemporary aesthetic in keeping with the design and style of the home. The feature-length stacker windows open out to two

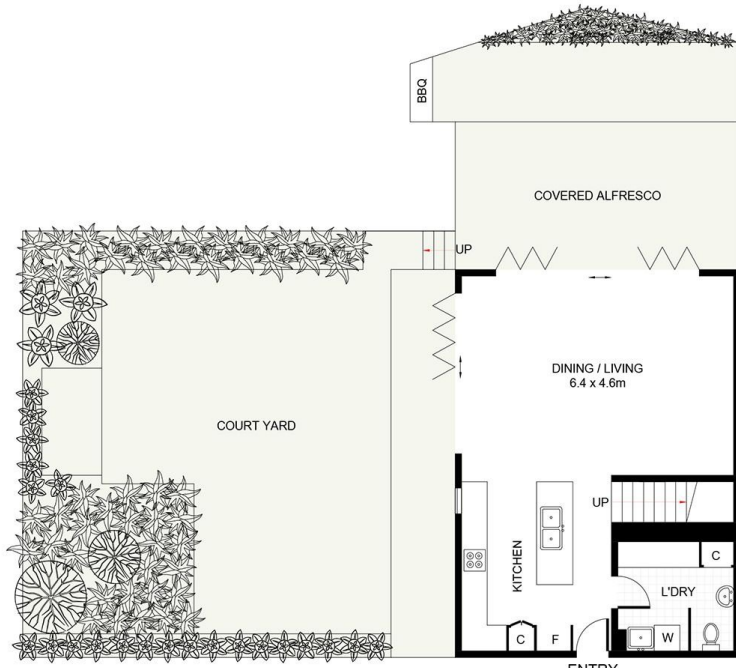
Type : Townhouse

View : <https://www.jreproperty.com.au/sale/nsw/sutherland-gyMEA-bay/residential/townhouse/7489068>

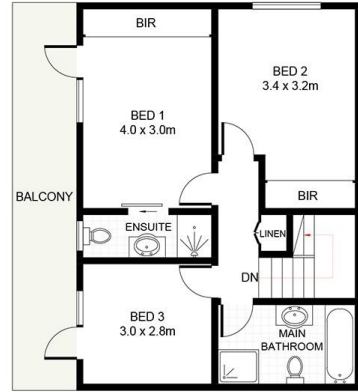
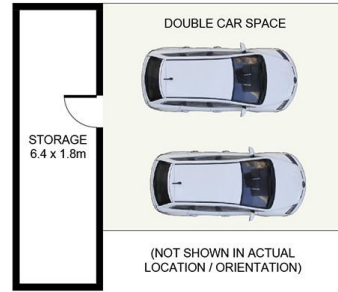


Luke Jeffree
02 9540 2222

[For full version visit the website](https://www.jreproperty.com.au)



ENTRY LEVEL



UPPER LEVEL



2/25-27 Barraran Street, Gymea

DISCLAIMER: PLANS SHOWN ARE FOR PRESENTATION PURPOSES AND ARE NOT PART OF ANY LEGAL DOCUMENT. ALL MEASUREMENTS AND FIGURES ARE APPROXIMATE.