



9/19-23 Koorabel Avenue GYMEA NSW

2 **1** **2**

Enjoying a top floor elevation in the quality complex, this fresh and modern apartment offers an easy care lifestyle of undeniable convenience. Substantially proportioned, it rests just footsteps to the hub of GyMEA village, bus and rail. Adding to its appeal is a sun drenched East facing balcony.

- * Top floor elevation
- * Light filled interiors
- * Expansive open plan living and dining area
- * Modern kitchen with plenty of cupboard space
- * Two well proportioned bedrooms, both with built in wardrobes
- * Tandem lock up garage in a well maintained security complex

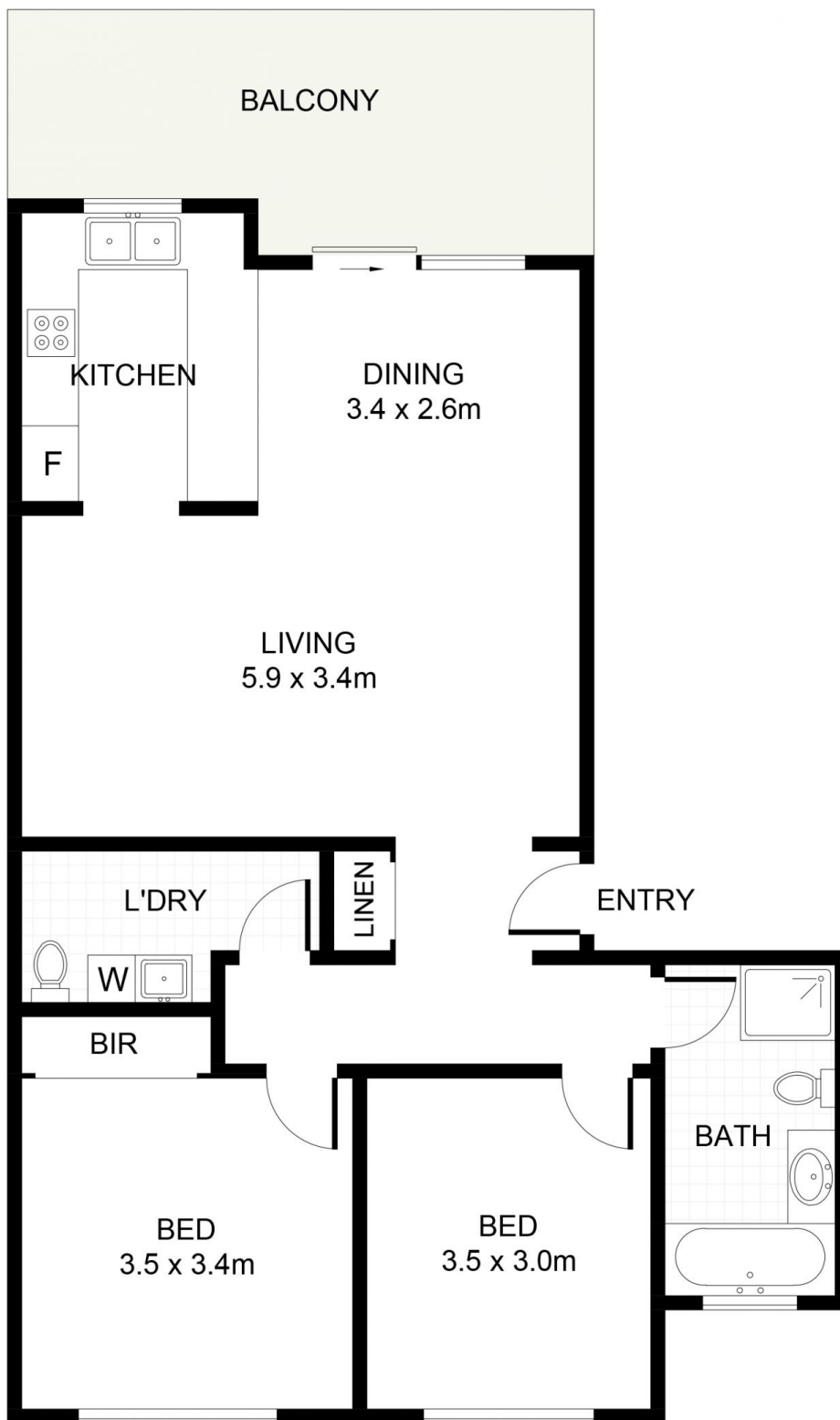
Type : Apartment

View : <https://www.jreproperty.com.au/sale/nsw/sutherland/gyMEA/residential/apartment/7489069>



Trent Jeffree
02 9540 2222

[For full version visit the website](https://www.jreproperty.com.au)



(NOT SHOWN IN ACTUAL
LOCATION / ORIENTATION)



9/19-23 Koorabel Avenue, Gympie

DISCLAIMER: PLANS SHOWN ARE FOR PRESENTATION PURPOSES AND ARE NOT PART OF ANY LEGAL DOCUMENT. ALL MEASUREMENTS AND FIGURES ARE APPROXIMATE.