



5 Salisbury Place GYMEA BAY NSW

5 🏠 3 🚗 2 🚗

Showcasing a delightful level of quality and finish, this multi-level family residence delivers calming neutral interiors and natural light filled spaces that will impress and inspire.

Type : House
View : <https://www.jreproperty.com.au/sale/nsw/sutherland/gymea-bay/residential/house/7489077>

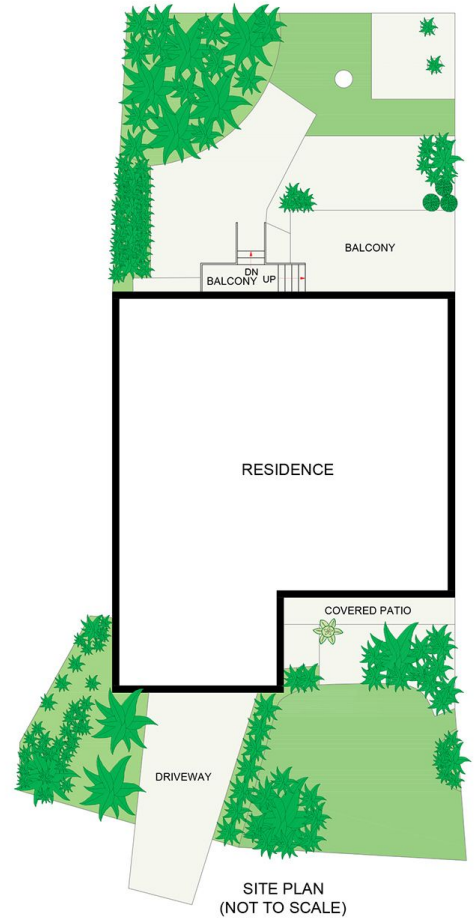
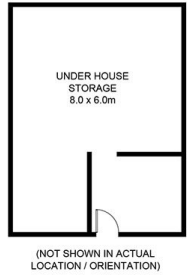
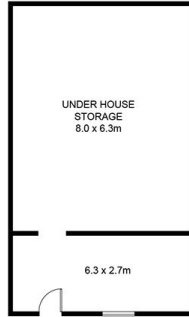
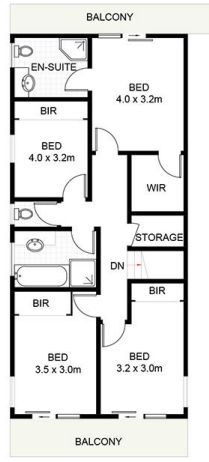
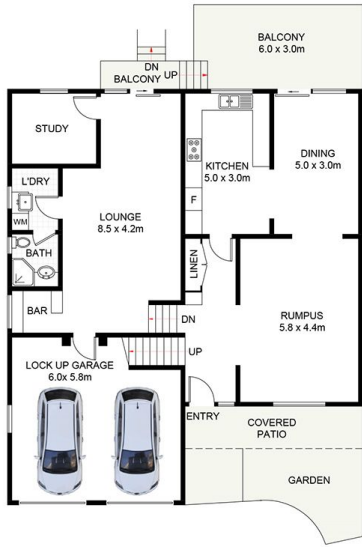
Classically appealing interiors invite superior multi-level living and entertaining with ground floor environs including zoned formal and informal living areas, separate study and a gourmet kitchen featuring quality appliances, custom cabinetry, alfresco decking areas, surrounded by lush plantings and providing an easy low maintenance lifestyle.



Trent Jeffree
02 9540 2222

Upstairs the accommodations level provides four double bedrooms with built-in robes, with a master suite comprising of a large walk-in robe, full ensuite and private

[For full version visit the website](https://www.jreproperty.com.au)



5 Salisbury Place, Gymea Bay

DISCLAIMER: PLANS SHOWN ARE FOR PRESENTATION PURPOSES AND ARE NOT PART OF ANY LEGAL DOCUMENT. ALL MEASUREMENTS AND FIGURES ARE APPROXIMATE.