



2/35-37 Chapman Street GYMEA NSW

2 1 1

Offering a superb sense of proportion, this classically charming two bedroom ground floor apartment showcases a sense of peace and tranquility in a prized Gymea locale. With the spaciousness that 123m2 affords and set within lush garden surrounds of a highly sought complex, the generously sized open plan living and dining space is complimented by a fully equipped kitchen that overlooks the alfresco entertaining courtyard space.

Two double bedrooms feature built-in robes and share the fully tiled, central bathroom with separate shower and bath. Transitioning effortlessly outdoors from the meals area is the expansive alfresco entertaining space providing an opportunity for morning breakfasts or evening drinks. Fully tiled and secluded, it offers ample opportunity for

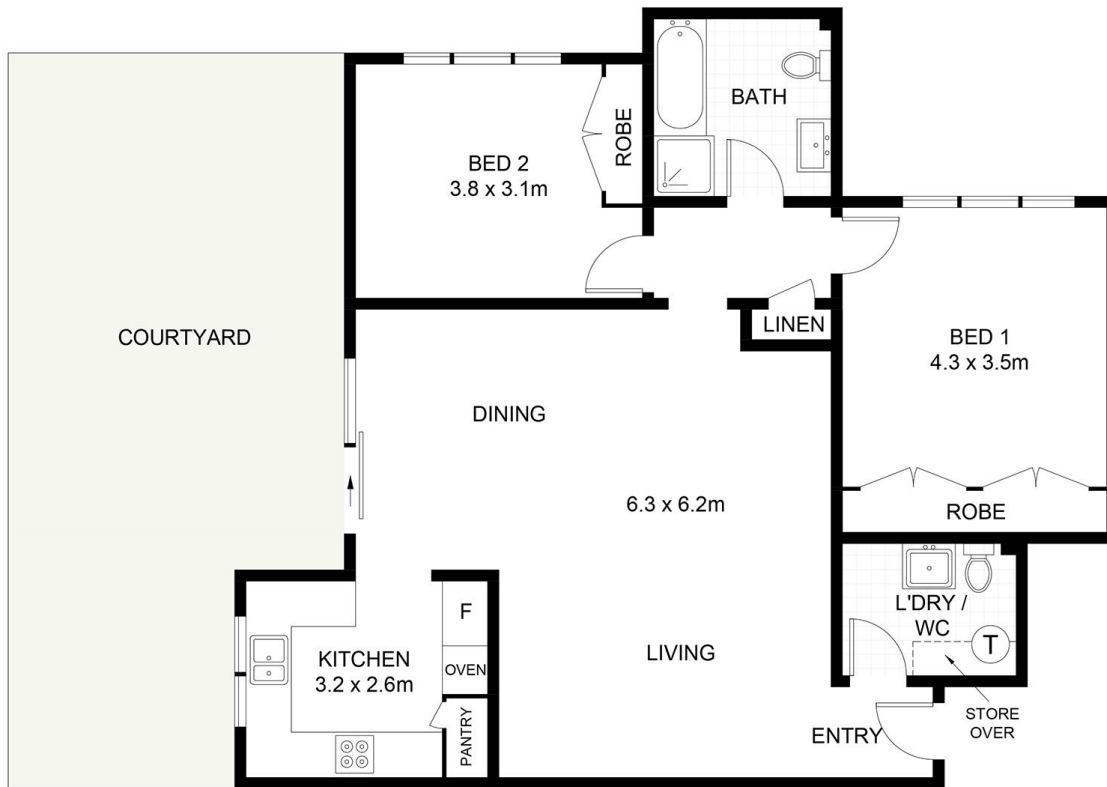
Type : Apartment

View : <https://www.jreproperty.com.au/sale/nsw/sutherland/gymea/residential/apartment/7489078>



Trent Jeffree
02 9540 2222

[For full version visit the website](https://www.jreproperty.com.au)



TOP FLOOR



GROUND FLOOR



Chapman Street, Gymea

DISCLAIMER: PLANS SHOWN ARE FOR PRESENTATION PURPOSES AND ARE NOT PART OF ANY LEGAL DOCUMENT. ALL MEASUREMENTS AND FIGURES ARE APPROXIMATE.