



4/3-5 Clements Parade KIRRAWEE NSW

3 1 1

Advantaged by a sensational location moments from local village shopping and transport, this comfortable townhouse boasts spacious proportions in a private setting. Low maintenance, highly functional and ready for immediate enjoyment, this well maintained and beautifully presented residence is ideally located in a boutique development focusing on privacy, convenience and space for all.

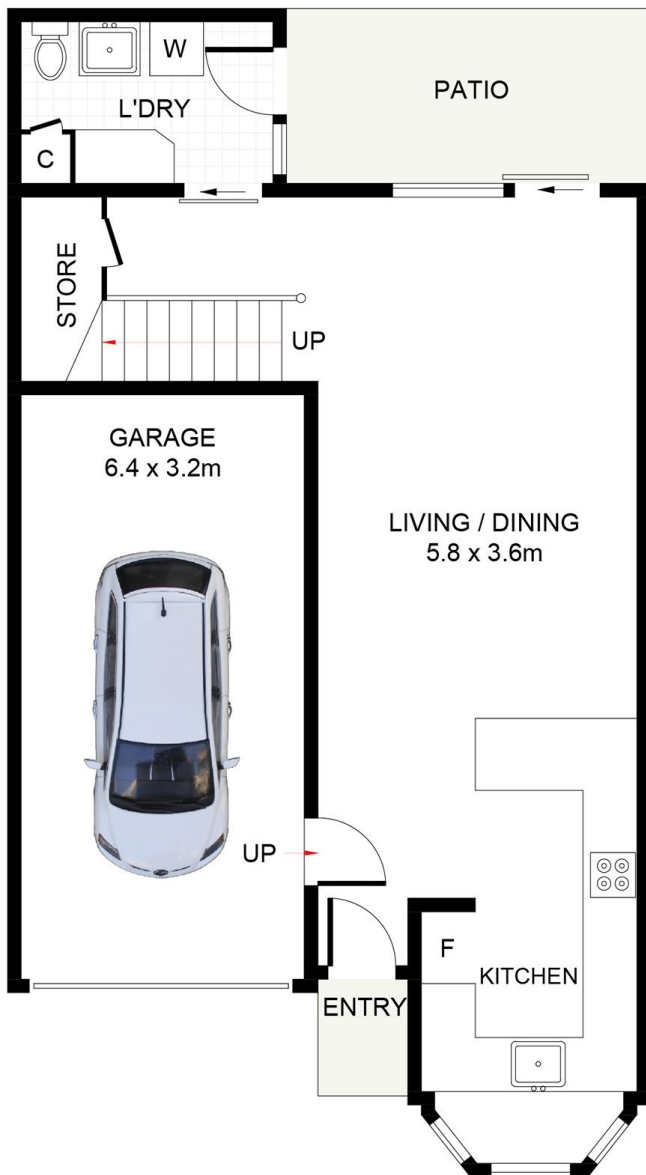
Featuring an abundance of natural light and supreme privacy throughout, an open plan living and dining space complement the gourmet kitchen with contemporary bespoke cabinetry, stone benchtops, breakfast bar and quality appliances. An effortless transition to the outdoors is created by glass sliding doors that introduce the private alfresco courtyard with a leafy treed outlook and decked

Type : Townhouse
Building Size : 18 sqm
View : <https://www.jreproperty.com.au/sale/nsw/sutherland/kirrawee/residential/townhouse/7489082>

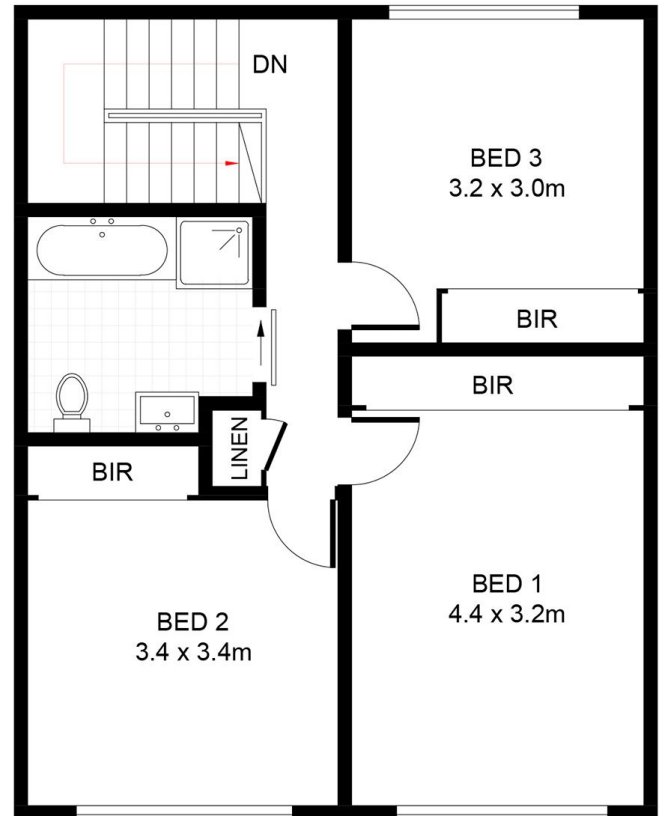


Trent Jeffree
02 9540 2222

[For full version visit the website](https://www.jreproperty.com.au)



ENTRY LEVEL



UPPER LEVEL



4/3-5 Clements Parade, Kirrawee

DISCLAIMER: PLANS SHOWN ARE FOR PRESENTATION PURPOSES AND ARE NOT PART OF ANY LEGAL DOCUMENT. ALL MEASUREMENTS AND FIGURES ARE APPROXIMATE.