



13 Huskisson Street GYMEA BAY NSW

2 1

Privately set with lush tropical surrounds this home is quaint in its current size but boasts a tranquil retreat and a leafy outlook with direct access to Dents Creek. Residing in a cul-de-sac street and promoting a relaxed lifestyle away from busy surrounds this property is an enviable family environment placed within a premium enclave.

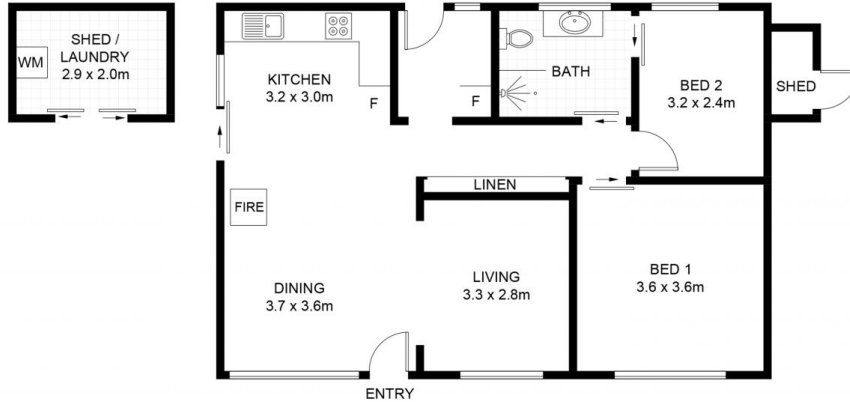
Type : House
Land Size : 588.1 sqm
View : <https://www.jreproperty.com.au/sale/nsw/sutherlandland/gymea-bay/residential/house/7489085>

- * Two bedroom home, split system air conditioning
- * Attractive kitchen with dishwasher and gas appliances
- * Cosy lounge and separate dining area with slow combustion fireplace
- * Updated bathroom, tiled floor to ceiling
- * Outdoor alfresco paved deck overlooking tranquil private surrounds



Luke Jeffree
02 9540 2222

[For full version visit the website](https://www.jreproperty.com.au)



Huskisson Street, GyMEA Bay

DISCLAIMER: PLANS SHOWN ARE FOR PRESENTATION PURPOSES AND ARE NOT PART OF ANY LEGAL DOCUMENT. ALL MEASUREMENTS AND FIGURES ARE APPROXIMATE.