



**303/750 Kingsway GYMEA NSW**

2 2 2

**ARTISTE**

Magnificent apartment boasting an abundance of natural light and generous functional proportions. Positioned on the third floor of a beautifully maintained security complex this modern masterpiece apartment has everything to offer.

With 2 generous bedrooms and a private north facing balcony this property will be sought after and is ideally suited to both owner occupiers and investors alike. All whilst being positioned conveniently in the heart of vibrant Gymea, close to transport and with all of Gymea's cafe culture and boutique shops at your door step.

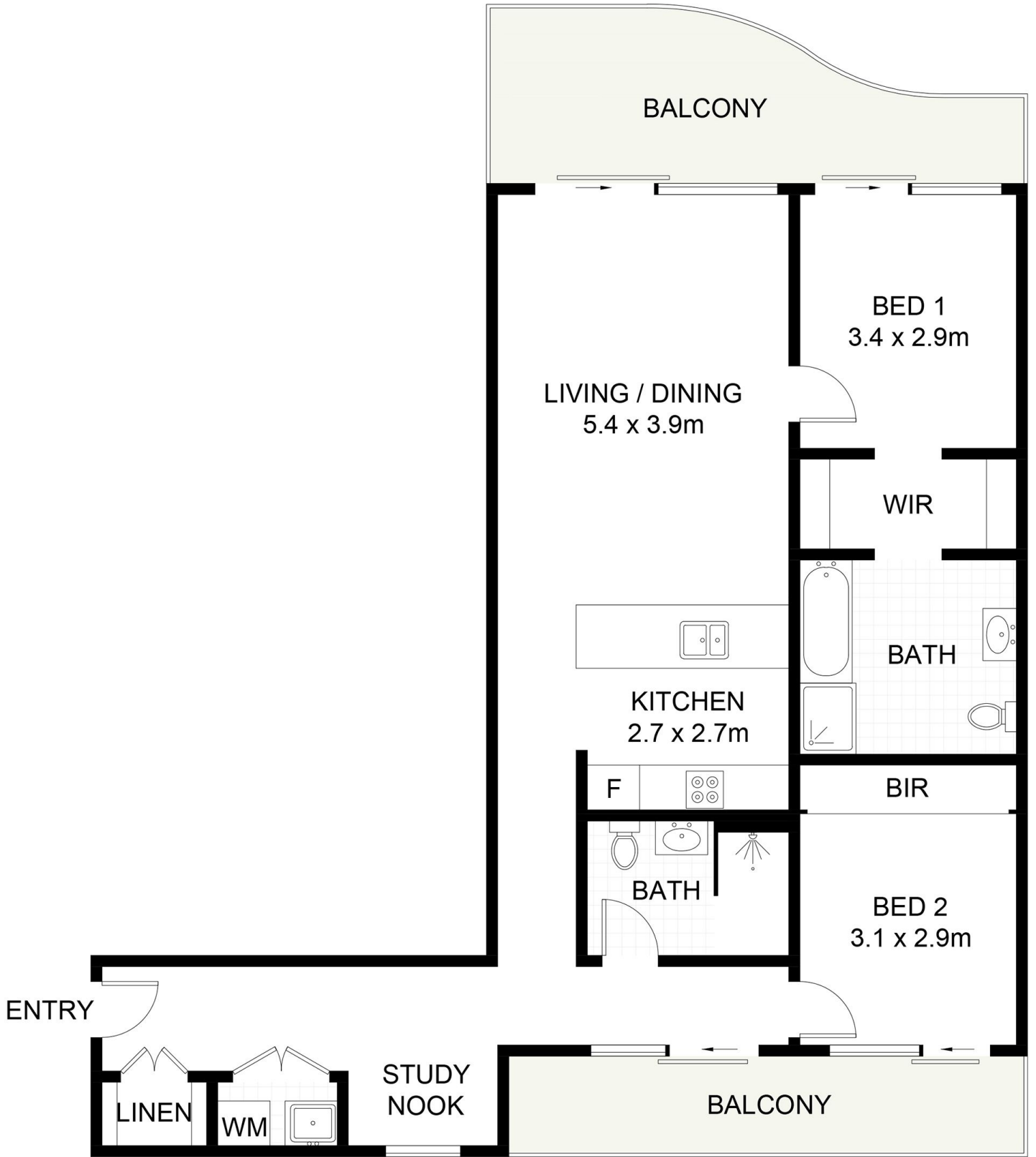
\* 2 generous bedrooms and added study nook area

**Type** : Unit  
**View** : <https://www.jreproperty.com.au/sale/nsw/sutherland/gymea/residential/unit/7489094>



**Luke Jeffree**  
**02 9540 2222**

[For full version visit the website](#)



303/750 Kingsway, Gymea

DISCLAIMER: PLANS SHOWN ARE FOR PRESENTATION PURPOSES AND ARE NOT PART OF ANY LEGAL DOCUMENT. ALL MEASUREMENTS AND FIGURES ARE APPROXIMATE.