



209/16 Warburton Street GYMEA NSW

1 1 1

This quality residence provides exceptional accommodation with great appeal to downsizers first home buyers or the savvy investors. With a classic timeless design, and lift access to the second floor this apartment displays not only elegance but also ease of access to popular Gymea Village, Hazelhurst Gallery and Transport.

- Open plan & spacious living and dining areas
- Modern stone kitchen with gas cooking and SMEG appliances
- One generous bedroom with built in wardrobes
- Additional study nook, Internal laundry, lift access
- Leafy outlook with adjusting privacy screens on the balcony
- Single security car space in secure basement parking

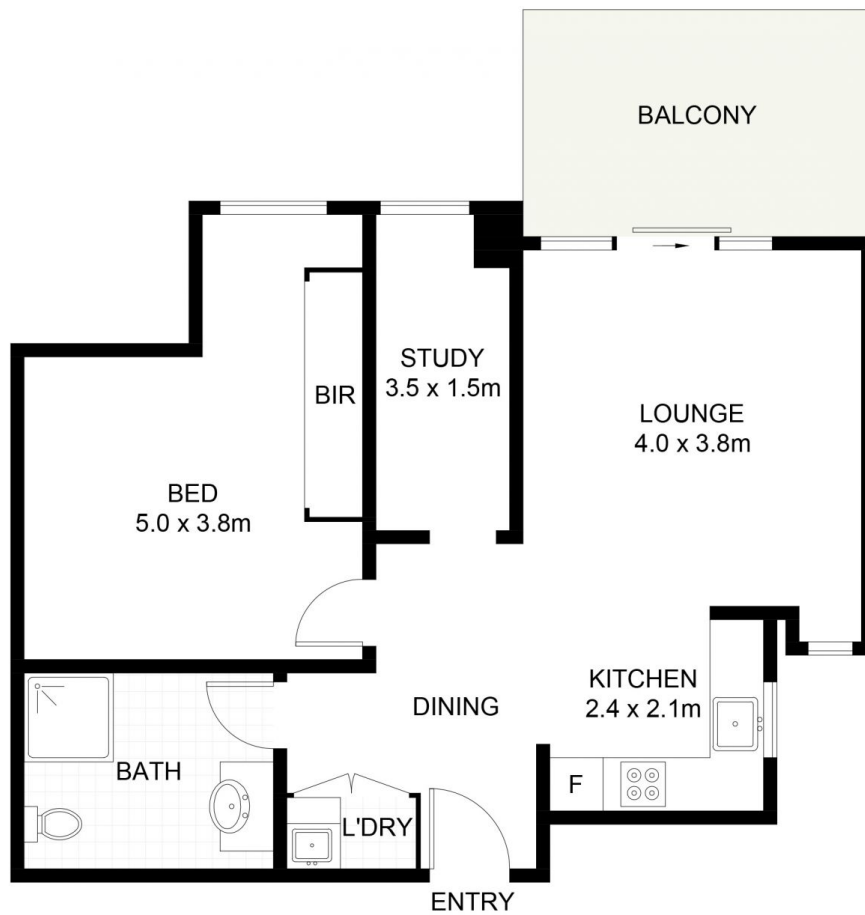
Type : Unit

View : <https://www.jreproperty.com.au/sale/nsw/sutherland/gymea/residential/unit/7489095>



Luke Jeffree
02 9540 2222

[For full version visit the website](https://www.jreproperty.com.au)



(NOT SHOWN IN ACTUAL LOCATION / ORIENTATION)



209/16 Warburton Street, Gymea

DISCLAIMER: PLANS SHOWN ARE FOR PRESENTATION PURPOSES AND ARE NOT PART OF ANY LEGAL DOCUMENT. ALL MEASUREMENTS AND FIGURES ARE APPROXIMATE.