



**1/304-306 President Avenue GYMEA NSW**

**3** **2** **2**

Perfectly appointed for contemporary indoor/outdoor living, this villa provides an easy-care lifestyle of comfort and convenience. With a private north-easterly outlook over Manchester Road from a spacious paved courtyard, it resides within a boutique well maintained complex of only 5.

- \* Spacious open plan living and dining
- \* Polished timber flooring in living areas
- \* Private paved alfresco courtyard
- \* Quality granite kitchen, plenty of cupboards
- \* All bedrooms with built in wardrobes
- \* Large master bedroom with ensuite
- \* Neat bathroom, tiled floor to ceiling
- \* Single lock up garage + single carport

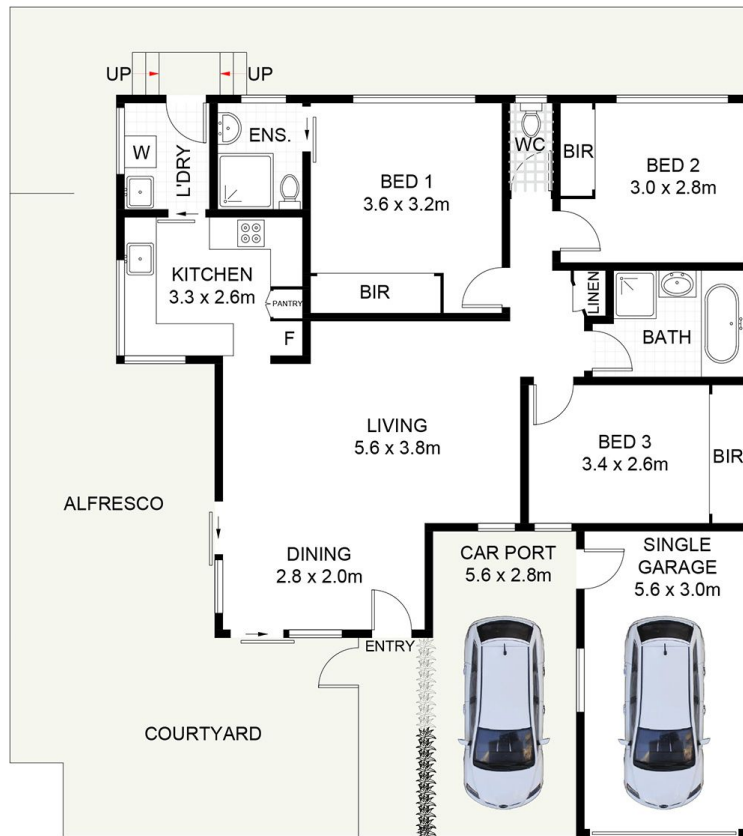
**Type** : Villa

**View** : <https://www.jreproperty.com.au/sale/nsw/sutherland/gyMEA/residential/villa/7489097>



**Trent Jeffree**  
**02 9540 2222**

[For full version visit the website](https://www.jreproperty.com.au)



1/304-306 President Avenue, Gympie

DISCLAIMER: PLANS SHOWN ARE FOR PRESENTATION PURPOSES AND ARE NOT PART OF ANY LEGAL DOCUMENT. ALL MEASUREMENTS AND FIGURES ARE APPROXIMATE.