

## 12/30 Talara Road GYMEA NSW

2 1 1

Looking to invest or make your first real estate purchase, then look no further than this affordable top floor, two-bedroom apartment. Positioned in a convenient and enviable location and only a short stroll to everything that popular GyMEA Village has to offer. Complete with a large north facing balcony & lock up garage this apartment will be popular to a large variety of buyers.

- \* Positioned on the top floor of a well-maintained strata complex
- \* 2 extra-large bedrooms, one bedroom with a built in wardrobe.
- \* Spacious kitchen with plenty of cupboards and bench space
- \* Combined lounge and dining with large north facing

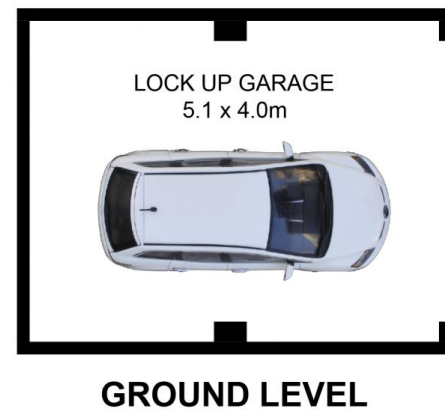
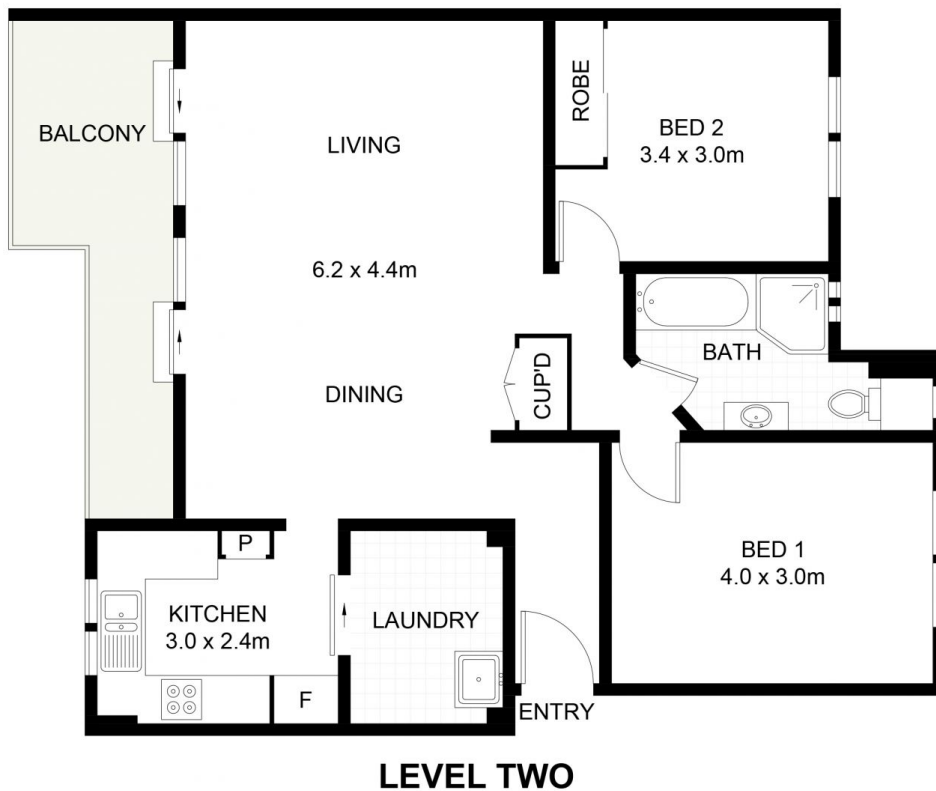
**Type** : Apartment

**View** : <https://www.jreproperty.com.au/sale/nsw/sutherland/gyMEA/residential/apartment/7489100>



**Luke Jeffree**  
02 9540 2222

[For full version visit the website](https://www.jreproperty.com.au)



12/30 Talara Road, GyMEA

DISCLAIMER: PLANS SHOWN ARE FOR PRESENTATION PURPOSES AND ARE NOT PART OF ANY LEGAL DOCUMENT. ALL MEASUREMENTS AND FIGURES ARE APPROXIMATE.