

4/351-353 President Avenue GYMEA NSW

2 1 1

A spacious apartment and outstanding location are what define this ground floor apartment which offers exceptional GyMEA buying. New carpet and freshly painted it provides a blank canvas opportunity for the savvy home owner or investor looking to add value. Short stroll to the GyMEA village caf?'s shops, rail, bus & schools.

- * Access to apartment via Koorabel Ave
- * Ground floor setting with a north outlook
- * Expansive open plan living and dining
- * Sizeable balcony ideal for entertaining
- * Kitchen with dishwasher & gas cooking
- * Both bedrooms boast built-in robes
- * Single lock up garage, internal laundry

Type : Apartment

View : <https://www.jreproperty.com.au/sale/nsw/sutherland/gyMEA/residential/apartment/7489101>

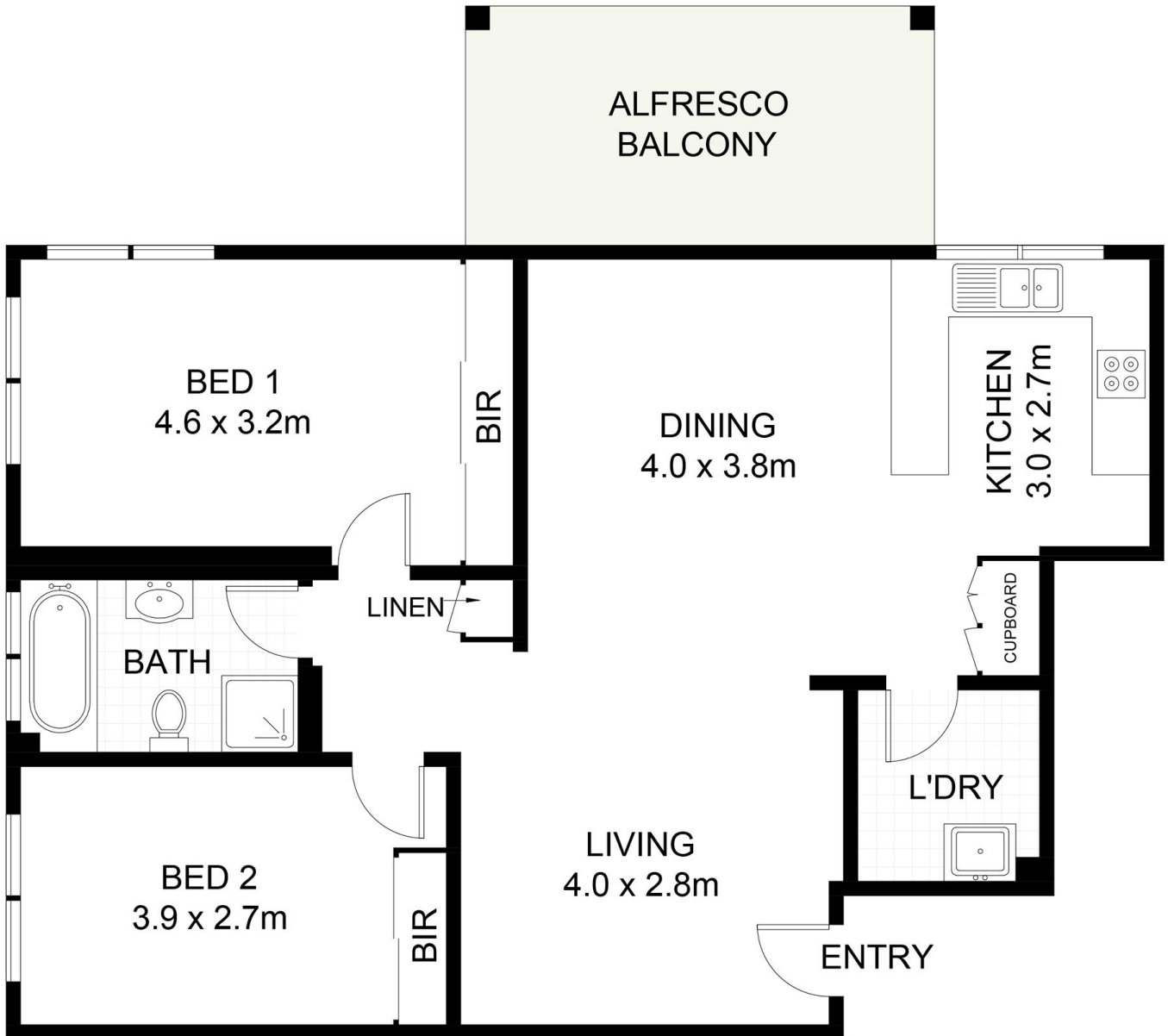


Dion Moon
02 9540 2222

[For full version visit the website](#)



(NOT SHOWN IN ACTUAL
LOCATION / ORIENTATION)



4/351-353 President Avenue, Gymea

DISCLAIMER: PLANS SHOWN ARE FOR PRESENTATION PURPOSES AND ARE NOT PART OF ANY LEGAL DOCUMENT. ALL MEASUREMENTS AND FIGURES ARE APPROXIMATE.