



5/35-37 Talara Road GYMEA NSW

2 1 1

Immaculately presented and situated on the first floor of a security complex providing a spacious floorplan allowing peaceful living and a maintenance free lifestyle. Minutes to popular Gymea Shopping Village, Caf?'s and transport.

Type : Apartment

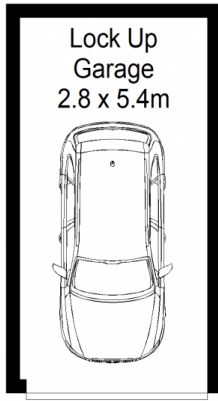
View : <https://www.jreproperty.com.au/sale/nsw/sutherland/gyMEA/residential/apartment/7489111>

- * Separate lounge and dining area with floating flooring and split system A/C
- * Renovated and immaculate kitchen with dishwasher and plenty of cupboards
- * Updated bathroom, tiled floor to ceiling with separate bath and shower
- * Generous and private North facing balcony
- * Single lock up garage, security complex, currently rented for \$530 PW

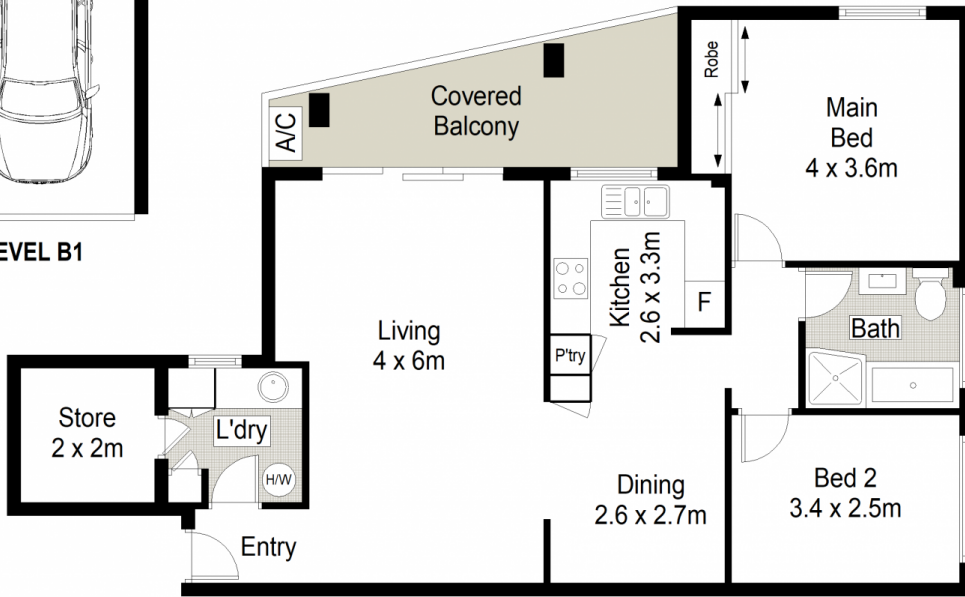


Trent Jeffree
02 9540 2222

[For full version visit the website](https://www.jreproperty.com.au)



LEVEL B1



LEVEL 2

CENTURY 21 Jeffree
Real Estate



5/35 Talara Road, Gymea

This diagram is for illustrative purpose only. All reasonable care has been taken in the preparation, but no warranty is given as to the accuracy of the information. This document does not constitute any part of any offer or contract. Dimensions shown are approximate only. Prospective purchasers must rely on their own enquiries.