



67 North West Arm Road Gymea NSW

4 2 1

Customised for the ease of everyday family living, this immaculate home showcases versatile spaces and a multitude of living spaces to suit a choice of needs. Fresh and bright with modern updates, it displays a versatile floor plan enhanced by an appealing alfresco entertaining area and pool. The central location is perfect to access great local schools, shops, eateries and transport.

- ? Multiple options for living and dining areas, split system A/C
- ? Modern kitchen with dishwasher and plenty of cupboards
- ? Four bedrooms all with built in wardrobes, plenty of storage
- ? West facing yard with pool and timber deck and tropical setting
- ? Single car space, drive through to backyard access, Kirrawee High catchment

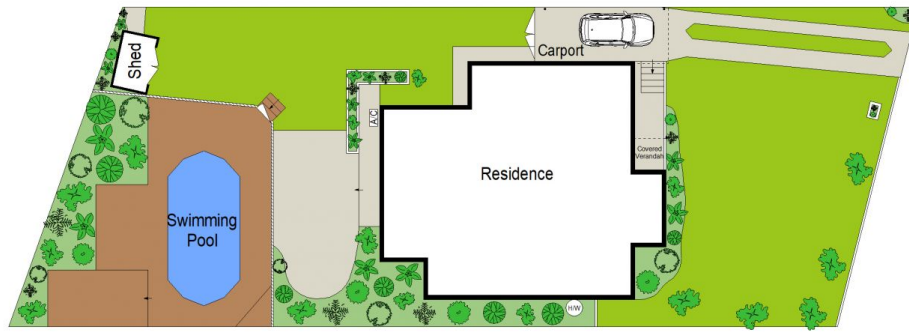
Price : \$ 1,570,000
Land Size : 594.4 sqm
View : <https://www.jreproperty.com.au/sale/nsw/sutherland/gymea/residential/house/7511786>



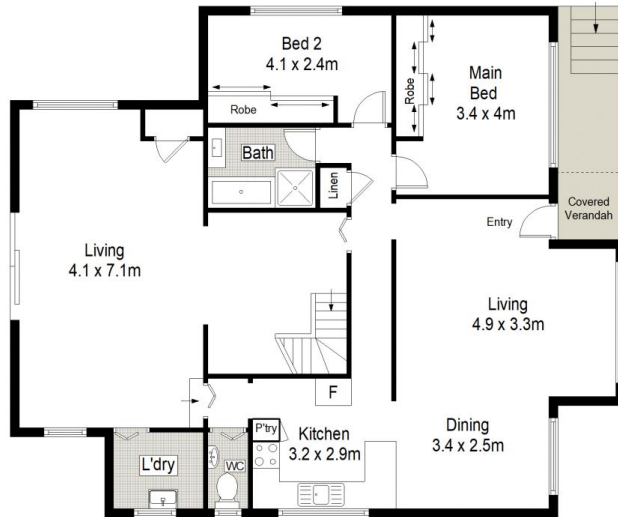
Luke Jeffree
02 9540 2222



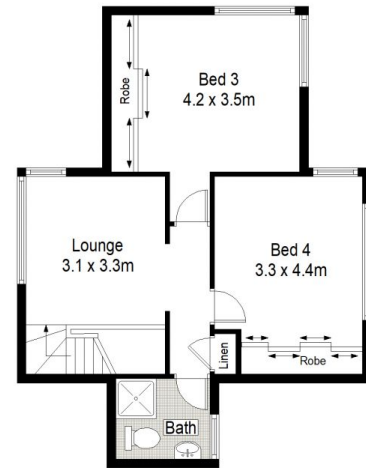
Belinda Sanders
02 9540 2222



SITE PLAN (NOT TO SCALE)



GROUND FLOOR



FIRST FLOOR

JRE PROPERTY



67 North West Arm Road, Gymea

This diagram is for illustrative purpose only. All reasonable care has been taken in the preparation, but no warranty is given as to the accuracy of the information. This document does not constitute any part of any offer or contract. Dimensions shown are approximate only. Prospective purchasers must rely on their own enquiries.