



175 Kiora Road Yowie Bay NSW

5 3 1

Behind its gorgeous façade is a home that's been curated to meet modern family needs across an impressive single level. Absolutely perfect for young and growing families, this deceptively spacious residence exudes a warm and welcoming ambience while flaunting huge proportions for exceptional family living. This stylish home provides a quality lifestyle whilst also accommodating the extended family or potential home business opportunity.

- ? Five generous & light filled bedrooms with built in wardrobes & ceiling fans
- ? Primary bedroom with newly renovated ensuite with heated flooring
- ? Updated kitchen, induction cooktop, stone benches & shaker doors & drawers

[For full version visit the website](https://www.jreproperty.com.au)

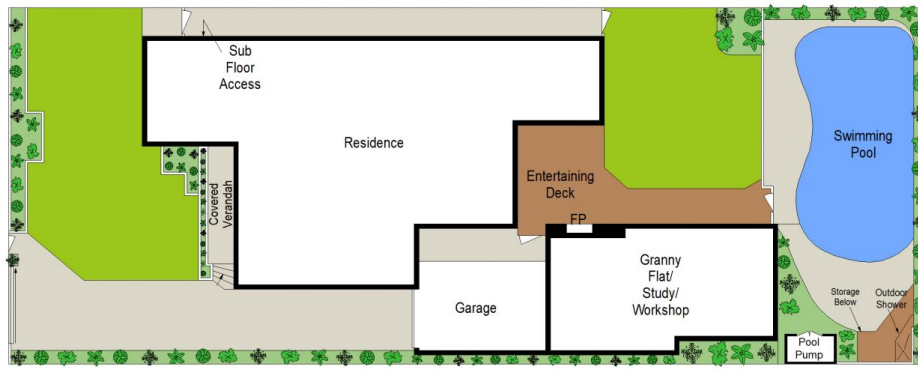
Type : House
Price : \$ 2,100,000
Land Size : 607 sqm
View : <https://www.jreproperty.com.au/sale/nsw/sutherland/yowie-bay/residential/house/7513492>



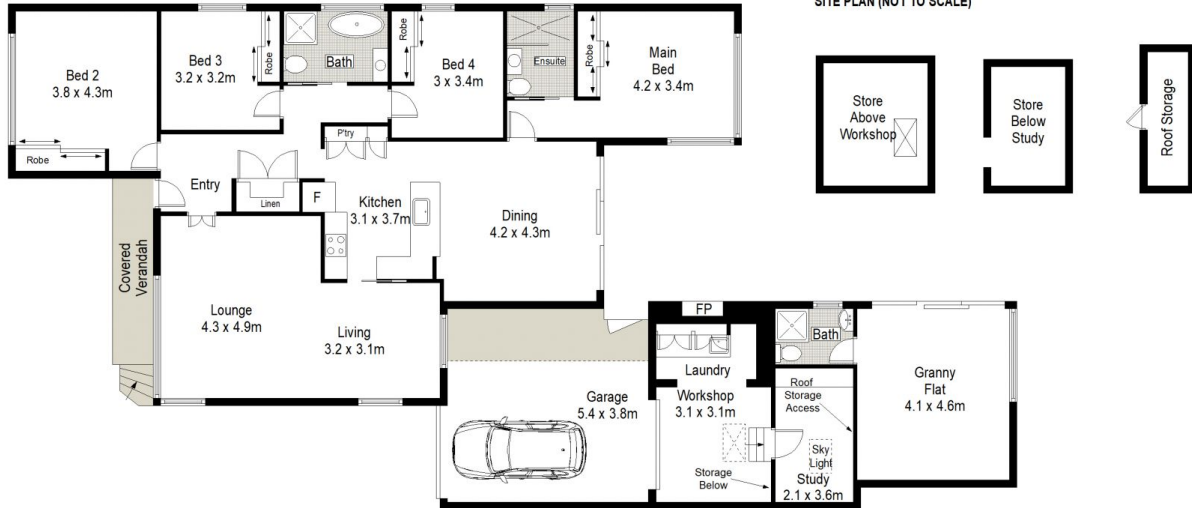
Luke Jeffree
02 9540 2222



Belinda Sanders
02 9540 2222



SITE PLAN (NOT TO SCALE)



JRE PROPERTY



175 Kiara Road, Yowie Bay

This diagram is for illustrative purpose only. All reasonable care has been taken in the preparation, but no warranty is given as to the accuracy of the information. This document does not constitute any part of any offer or contract. Dimensions shown are approximate only. Prospective purchasers must rely on their own enquiries.