



17/14-18 Koorabel Avenue Gymea NSW

2 1 2

Remarkable in its proportions this modern top floor two bedroom apartment rests in a well maintained security block and is just moments to everything that popular Gymea Village has to offer.

Offering peace, privacy and boasting light filled interiors throughout, this rare offering is ideally suited to both owner occupiers and investors. Boasting two spacious bedrooms, modern bathroom and kitchen along with a generous sized balcony plus an internal laundry. This one ticks all the boxes.

Rates : Council \$358.98 p/q | Strata \$1,114.80 p/q | Water \$150.00 p/q

[For full version visit the website](https://www.jreproperty.com.au)

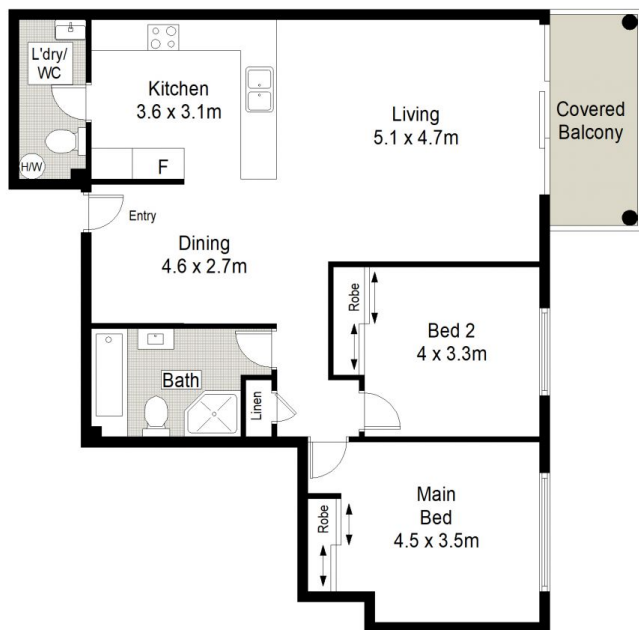
Type : Unit
Price : \$ 860,000
Land Size : 129 sqm
View : <https://www.jreproperty.com.au/sale/nsw/sutherland/gymea/residential/unit/7531638>



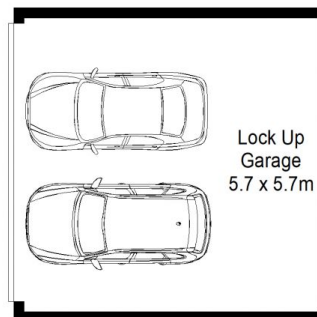
Luke Jeffree
02 9540 2222



Belinda Sanders
02 9540 2222



TOP FLOOR



LEVEL B1

