



30/42 Talara Road Gymea NSW

3 2 2

This first floor three-bedroom apartment boasts very generous proportions with lift access. Enjoying a favourable north aspect and with extensive living spaces, this property is perfect for those who value house size proportions and a low maintenance lifestyle that comes with apartment living.

All whilst being positioned conveniently in the heart of vibrant Gymea, close to transport and with all of Gymea's cafe culture and boutique shops at your door step. This exceptional apartment is ready for immediate enjoyment and is perfect for empty nesters, families or those who are after some extra space in this popular area.

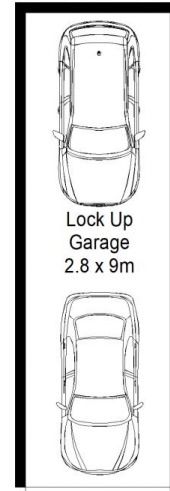
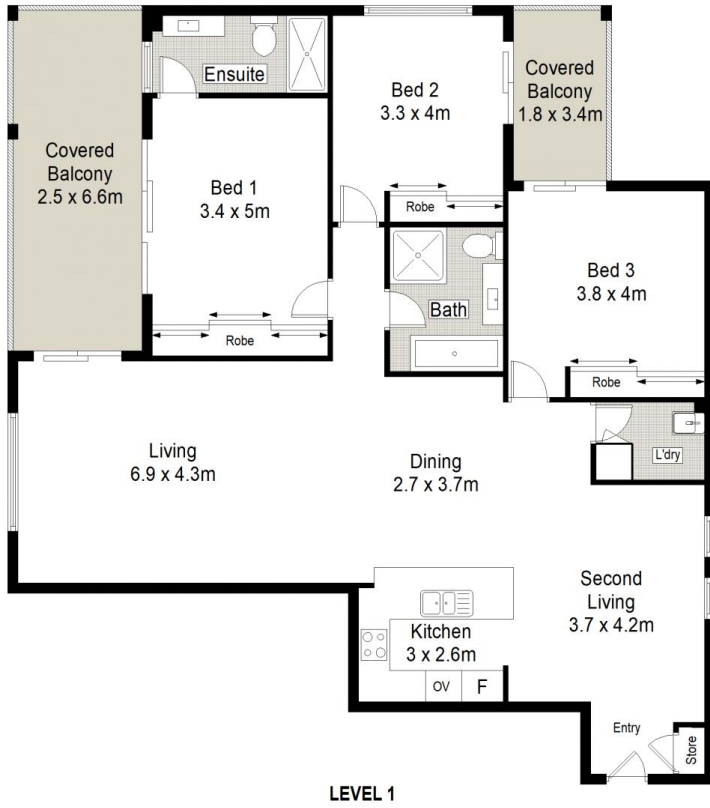
? Three bedrooms all with built in wardrobes and access to balcony

[For full version visit the website](https://www.jreproperty.com.au)

Type : Apartment
Price : \$ 1,025,000
Land Size : 159 sqm
View : <https://www.jreproperty.com.au/sale/nsw/sutherland/gymea/residential/apartment/7562187>



Trent Jeffree
02 9540 2222



LEVEL B1

