



228 Forest Road GyMEA NSW

2 1 1

Don't miss your opportunity to inspect this immaculate and loved original two bedroom cottage home.

The property promotes an abundance of future potential to the astute renovator or someone who is looking to establish their dream home in a desired real estate locale. With only a short stroll to GyMEA shops, transport and cafes.

- ? Large living areas with polished boards and split system A/C
- ? 2 bedrooms, both large rooms and extra sunroom or potential 3rd bedroom
- ? Large grassed and fenced backyard with a single lock up garage
- ? Level 651.3sqm block with 12.19m frontage

[For full version visit the website](https://www.jreproperty.com.au)

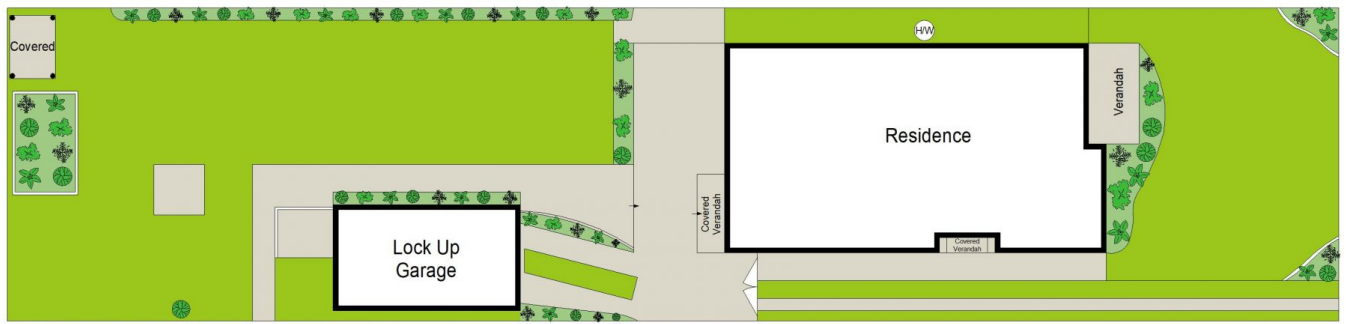
Type : House
Price : \$ 1,542,000
Land Size : 651.3 sqm
View : <https://www.jreproperty.com.au/sale/nsw/sutherland/gyMEA/residential/house/7582073>



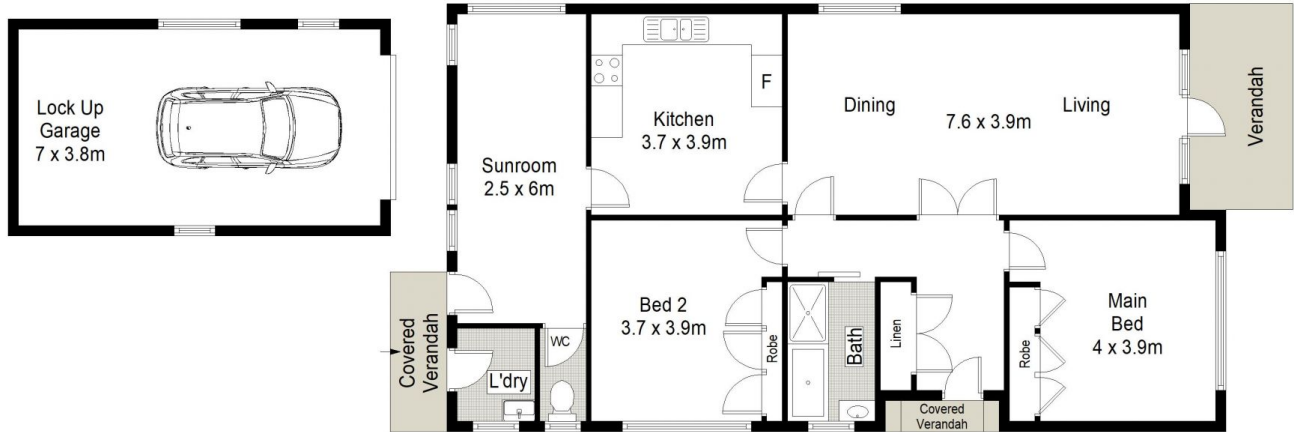
Luke Jeffree
02 9540 2222



Belinda Sanders
02 9540 2222



SITE PLAN (NOT TO SCALE)



JRE PROPERTY



228 Forest Road, Gympie

This diagram is for illustrative purpose only. All reasonable care has been taken in the preparation, but no warranty is given as to the accuracy of the information. This document does not constitute any part of any offer or contract. Dimensions shown are approximate only. Prospective purchasers must rely on their own enquiries.