



27/42 Talara Road Gymea NSW

3 2 2

Resting in a peaceful cul-de-sac is this immaculate ground floor, 3 bedroom apartment with oversized courtyard. This modern apartment will certainly impress with its substantial dimensions and stylish finishes.

Perfectly positioned only moments from the popular Hazelhurst Gallery Café, Gymea Shopping Village, train station and buses.

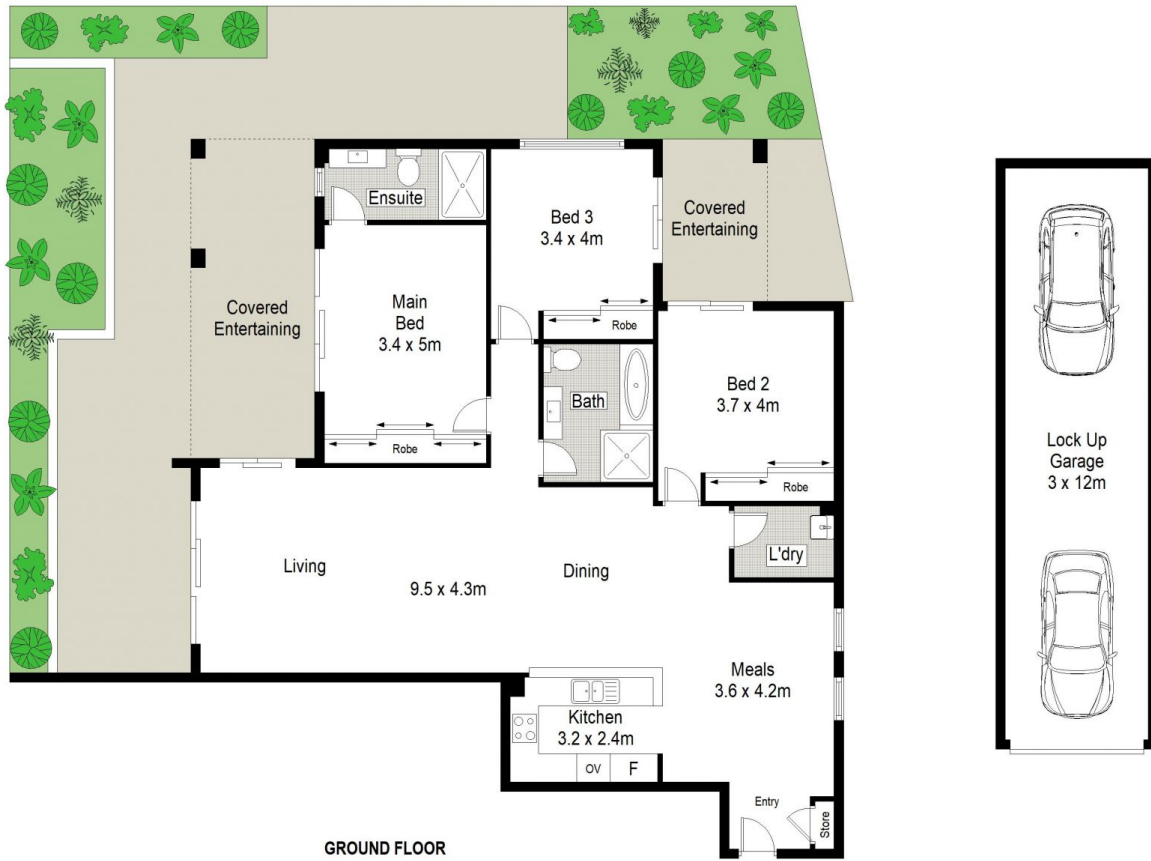
- * Sort out after location
- * Ground floor, huge courtyard
- * Master bedroom with ensuite, BIR, access to courtyard
- * Gas cooking / heating / hot water
- * Stainless steel appliances, granite benchtops
- * Internal laundry, tandem garage

[For full version visit the website](https://www.jreproperty.com.au)

Type : Apartment
Price : \$ 1,185,000
Building Size : 260 sqm
View : <https://www.jreproperty.com.au/sale/nsw/sutherland/gymea/residential/apartment/7583362>



Trent Jeffree
02 9540 2222



JRE PROPERTY



27/42 Talara Road, Gymea

This diagram is for illustrative purpose only. All reasonable care has been taken in the preparation, but no warranty is given as to the accuracy of the information. This document does not constitute any part of any offer or contract. Dimensions shown are approximate only. Prospective purchasers must rely on their own enquiries.