



25/42 Talara Road Gymea NSW

2 2 1

Resting in a peaceful cul-de-sac is this immaculate ground floor, 2 bedroom apartment with oversized courtyard. This modern oversized apartment will certainly impress with its substantial dimensions and stylish finishes.

Price : \$ 865,000

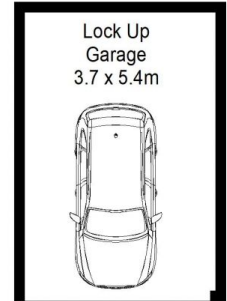
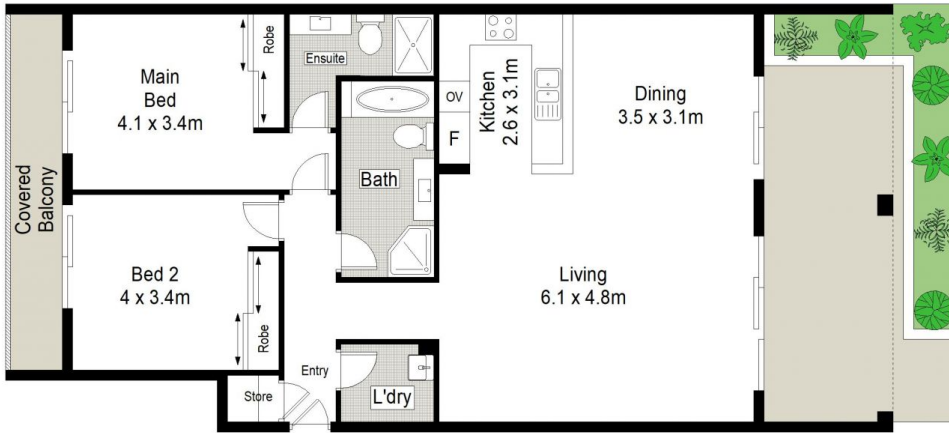
View : <https://www.jreproperty.com.au/sale/nsw/sutherland/gymea/residential/apartment/7583873>

Perfectly positioned only moments from the popular Hazelhurst Gallery Café, Gymea Shopping Village, train station and buses.

- * Sort out after location
- * Ground floor, huge courtyard
- * Master bedroom with ensuite, BIR, access to courtyard
- * Gas cooking / heating / hot water
- * Stainless steel appliances, granite benchtops
- * Lift access, security complex
- * Freshly painted
- * Size : Internal 141m2 - total 157m2



Trent Jeffree
02 9540 2222



JRE PROPERTY



25/42 Talara Road, Gymea

This diagram is for illustrative purpose only. All reasonable care has been taken in the preparation, but no warranty is given as to the accuracy of the information. This document does not constitute any part of any offer or contract. Dimensions shown are approximate only. Prospective purchasers must rely on their own enquiries.