



306/16 Warburton Street Gymea NSW

1 1 1

Providing exceptional accommodation with great appeal to downsizers first home buyers or the savvy investor this impressive top floor apartment is peacefully placed with a sunny north east aspect. This apartment displays elegant features and easy access to popular Gymea Village, Hazelhurst Gallery & transport.

- Open plan & spacious tiled living and dining areas
- Modern stone kitchen with gas cooking and SMEG appliances
- One generous bedroom with built in wardrobes
- Split system air conditioning, Internal laundry, lift access
- Bathroom tiled floor to ceiling, frameless shower and timeless fittings
- Single security car space in secure basement parking

Type : Apartment

Price : \$ 640,000

View : <https://www.jreproperty.com.au/sale/nsw/sutherland/gymea/residential/apartment/7605556>

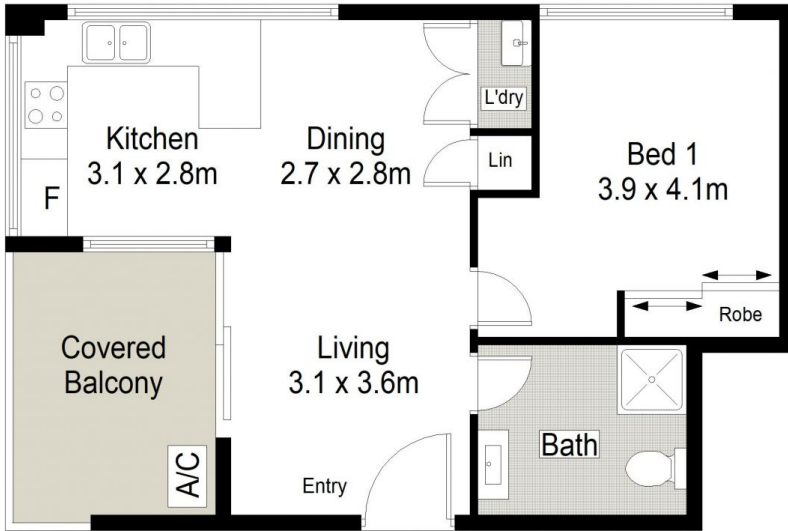


Luke Jeffree
02 9540 2222

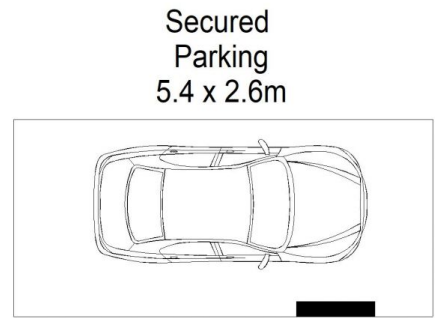


Belinda Sanders
02 9540 2222

[For full version visit the website](https://www.jreproperty.com.au)



TOP FLOOR



JRE PROPERTY



306/16 Warburton Street, Gymea

This diagram is for illustrative purpose only. All reasonable care has been taken in the preparation, but no warranty is given as to the accuracy of the information. This document does not constitute any part of any offer or contract. Dimensions shown are approximate only. Prospective purchasers must rely on their own enquiries.