



### 132 Ellesmere Road GyMEA Bay NSW

4 3 3

Enjoy the ever-changing picturesque panorama of the Port Hacking with this elevated full brick home with deep waterfront access.

Immersed in a peaceful and natural setting and perfectly configured whilst being drenched in natural light, the home is perfect to enjoy now with future exciting potential for improvements to enhance into your dream home capturing GyMEA Bay's perfection.

- ? Private location with views of the Port Hacking River & National Park
- ? Four generous bedrooms with wardrobes and views
- ? Updated kitchen with plenty of storage and bench space
- ? Sundrenched living areas with large balcony overlooking

[For full version visit the website](https://www.jreproperty.com.au)

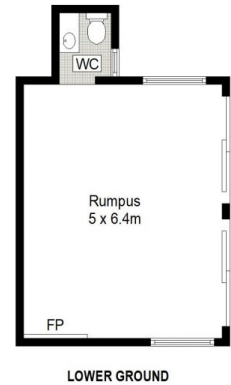
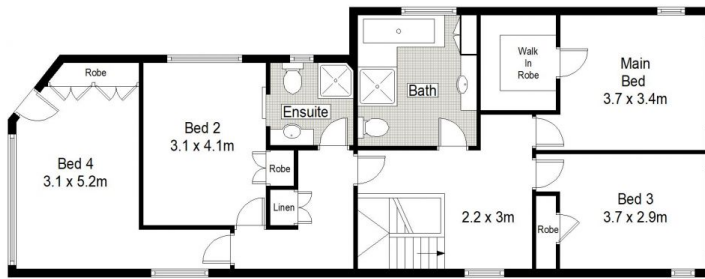
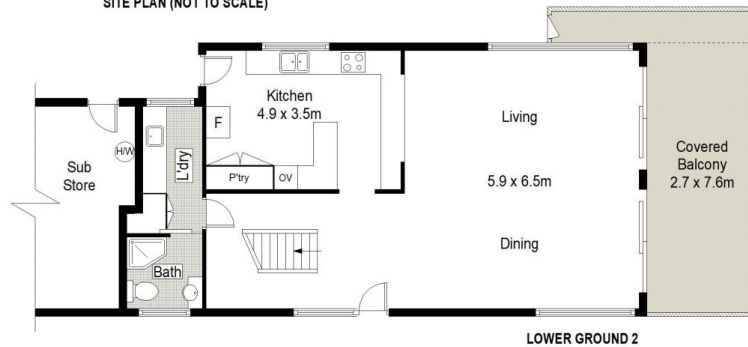
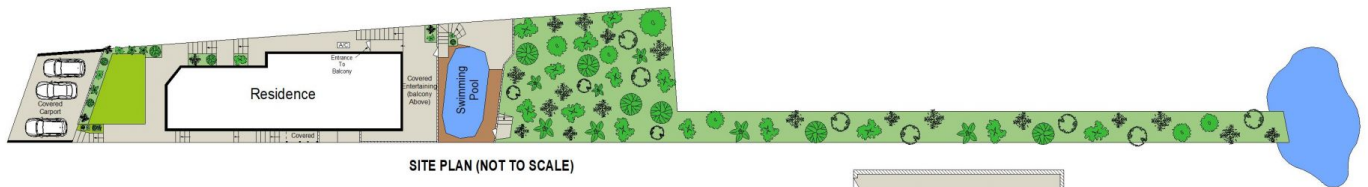
**Type** : House  
**Price** : \$ 2,300,000  
**Land Size** : 714.5 sqm  
**View** : <https://www.jreproperty.com.au/sale/nsw/sutherland/gyMEA-bay/residential/house/7637674>



**Luke Jeffree**  
02 9540 2222



**Belinda Sanders**  
02 9540 2222



JRE PROPERTY



132 Ellesmere Road, Gympie Bay

This diagram is for illustrative purpose only. All reasonable care has been taken in the preparation, but no warranty is given as to the accuracy of the information. This document does not constitute any part of any offer or contract. Dimensions shown are approximate only. Prospective purchasers must rely on their own enquiries.