



### 9/31-35 Premier Street Gymea NSW

2 1 1

Enviably placed just footsteps to Gymea village, this top floor apartment achieves the sought after combination of a peaceful and leafy street setting and absolute convenience. Its spacious and open plan dimensions provide premium comfort enhanced by intercom entry, secure parking and its expansive alfresco balcony.

- ? Generous family living and dining room
- ? Alfresco balcony enjoys a leafy outlook
- ? Kitchen with gas cooking and dishwasher
- ? Two generous sized beds, both with BIRS
- ? Bathroom fully tiled with separate bath & shower
- ? Internal laundry with second toilet
- ? SLUG, walk to transport, cafes

**Type** : Apartment

**Price** : \$ 805,000

**View** : <https://www.jreproperty.com.au/sale/nsw/sutherland/gymea/residential/apartment/7641028>

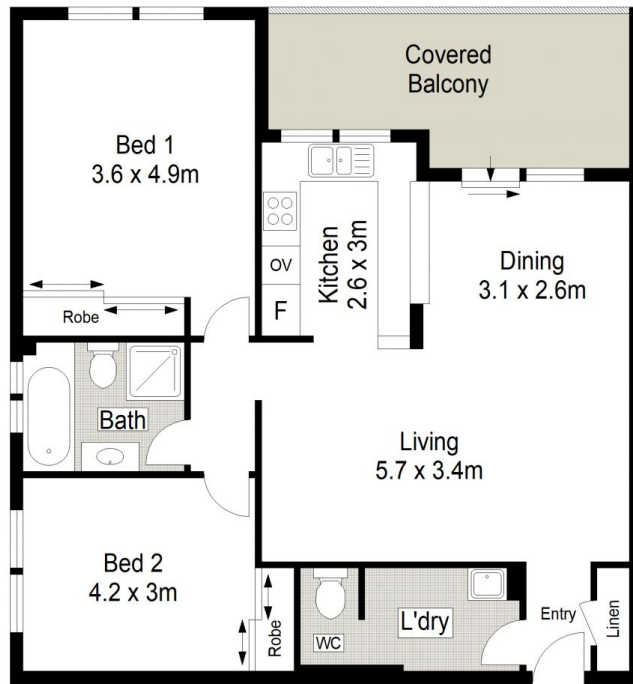


**Luke Jeffree**  
02 9540 2222

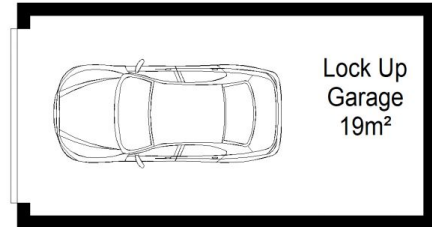


**Belinda Sanders**  
02 9540 2222

[For full version visit the website](https://www.jreproperty.com.au)



TOP FLOOR



BASEMENT