



3/56-58 Hotham Road Gymea NSW

3 2 2

Peacefully set at the rear of a boutique garden complex, this inviting townhouse is ready to enjoy. Full of natural light and enhanced by a spacious alfresco entertaining courtyard. Enjoy a superb convenient lifestyle with a short stroll to either Gymea's cafés & shops or Kirrawee's newly updated shopping hub and transport.

- ? Separate family living and casual dining areas with A/C
- ? Neat kitchen with dishwasher and plenty of space
- ? 3 generous beds, located on the top level, each with BIR's
- ? Master bedroom with ensuite and split system A/C
- ? Generous courtyard with large timber decking area
- ? Double lock up with garage with internal access

Type : Townhouse

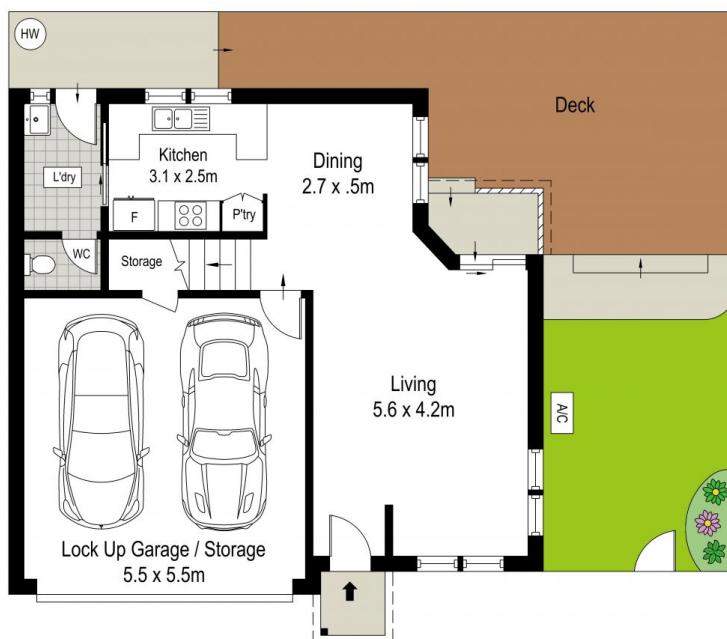
Price : \$ 1,045,000

View : <https://www.jreproperty.com.au/sale/nsw/sutherland/gymea/residential/townhouse/7643841>

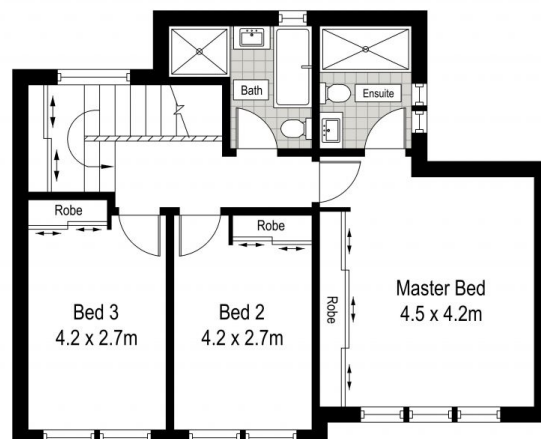


Trent Jeffree
02 9540 2222

[For full version visit the website](https://www.jreproperty.com.au)



GROUND FLOOR



FIRST FLOOR

