



**20/42 Talara Road Gymea NSW**

2 2 1

Expansively sized and stylishly appointed this 2nd floor apartment has substantial living areas that spill out to a peaceful & private alfresco balcony perfect for entertaining.

Promising premium comfort and delivering a cosmopolitan lifestyle with a short stroll to Gymea train station, schools and cafe's.

- ? Both bedrooms with wardrobes, master with ensuite
- ? Modern kitchen with stainless steel appliances & dishwasher
- ? Oversized open plan living and dining area
- ? Added convenience of an internal laundry w/ dryer
- ? Bonus of a single garage, balcony off bedrooms
- ? Well maintained security complex with lift access
- ? Size : Floor 117m2 Total including garage 137m2
- ? Outgoings : Council \$367.40 p/q, Water \$173.29 p/q,

**Price** : \$ 887,000

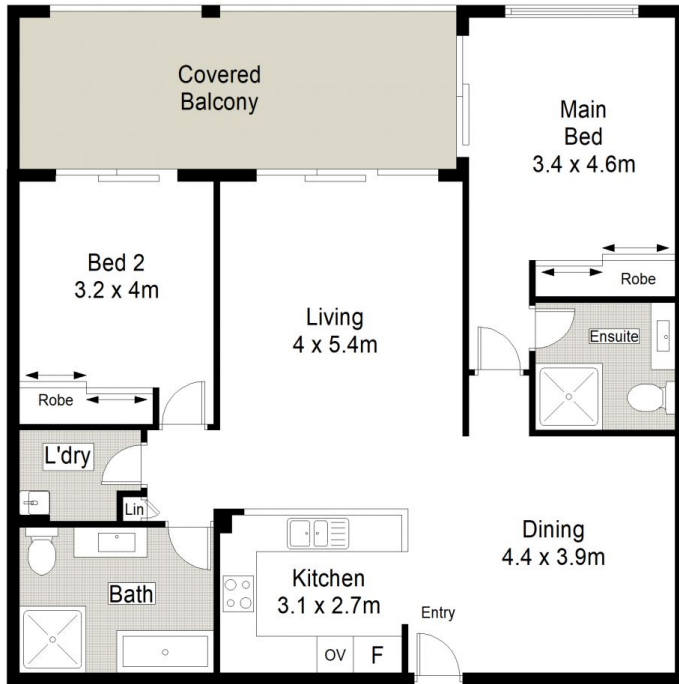
**View** : <https://www.jreproperty.com.au/sale/nsw/sutherland/gymea/residential/apartment/7675248>



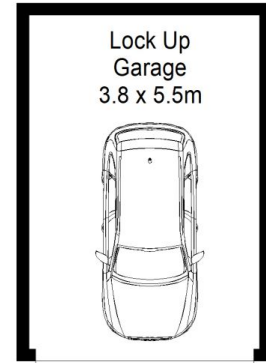
**Trent Jeffree**  
02 9540 2222



**Belinda Sanders**  
02 9540 2222



LEVEL 2



LEVEL B1

**JRE** PROPERTY



**20/42 Talara Road , Gymea**

This diagram is for illustrative purpose only. All reasonable care has been taken in the preparation, but no warranty is given as to the accuracy of the information. This document does not constitute any part of any offer or contract. Dimensions shown are approximate only. Prospective purchasers must rely on their own enquiries.