



36 First Avenue Gymea Bay NSW

4 2 1

Located in prestigious Gymea Bay and set on a large parcel of land approx. 834 sqm. This home is perfect for the growing family, renovator or is ideal for future development possibilities (STCA).

Enjoying a sought-after prime location address in a tree lined cul de sac, all within walking distance to the local school, sporting fields, Gymea Bay baths, bustling Gymea village shops and train station.

- ? Multiple living and dining areas with split system AC
- ? Four bedrooms all with built in wardrobes
- ? Central kitchen with dishwasher
- ? Large 834.7 sqm block with favourable sewer position

Type : House
Price : \$ 1,685,000
Land Size : 834.7 sqm
View : <https://www.jreproperty.com.au/sale/nsw/sutherland/gymea-bay/residential/house/7675567>

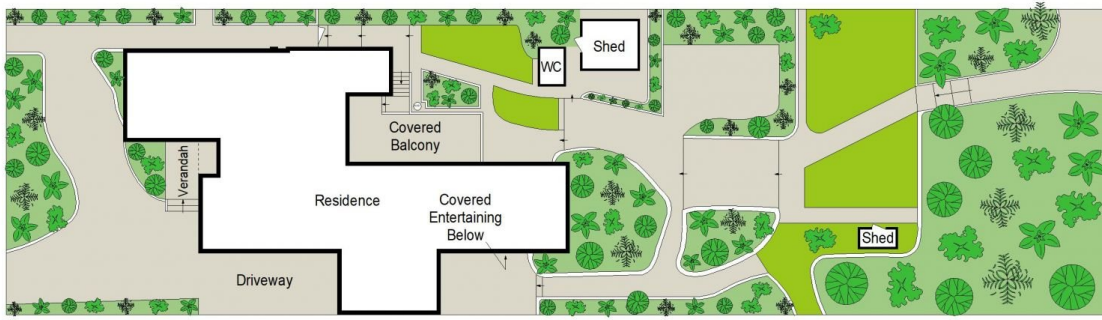


Luke Jeffree
02 9540 2222

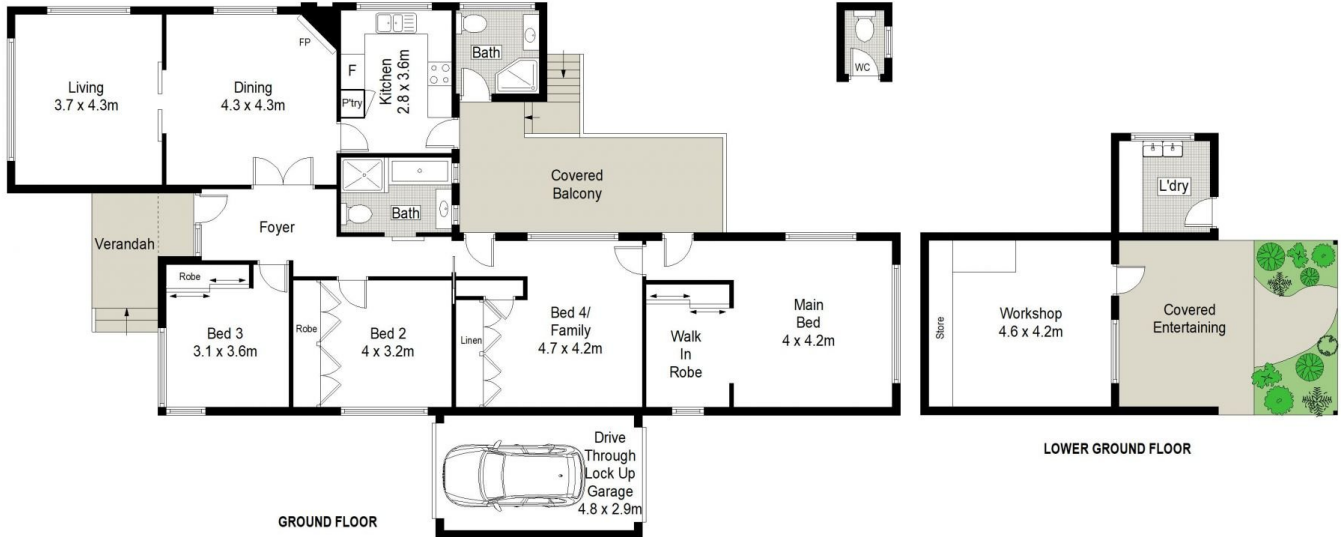


Belinda Sanders
02 9540 2222

[For full version visit the website](https://www.jreproperty.com.au)



SITE PLAN (NOT TO SCALE)



GROUND FLOOR

LOWER GROUND FLOOR

JRE PROPERTY



36 First Avenue, Gymea Bay

This diagram is for illustrative purpose only. All reasonable care has been taken in the preparation, but no warranty is given as to the accuracy of the information. This document does not constitute any part of any offer or contract. Dimensions shown are approximate only. Prospective purchasers must rely on their own enquiries.