



### 5/641 Kingsway Gymea NSW

2 1 1

This well-maintained townhouse provides the ultimate in low-maintenance living. Resting in a peaceful boutique setting, its spacious and comfortable surrounds are complimented by a generous alfresco courtyard ideal for entertaining. A convenient location and a short distance to shops & transport.

- ? Free flowing lounge and dining with split system A/C
- ? Contemporary kitchen with gas cooking and granite benchtop
- ? 2 generous bedrooms with an abundance of storage
- ? Tiled floor-to-ceiling bathroom with separate shower and bath
- ? Low maintenance courtyard facing northwest to enjoy the

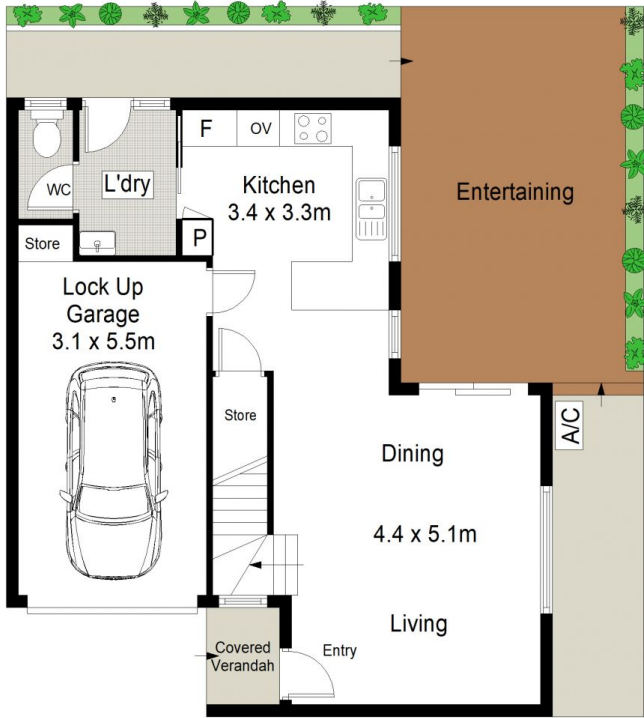
**Type** : Townhouse

**View** : <https://www.jreproperty.com.au/sale/nsw/sutherland/gymea/residential/townhouse/7720121>

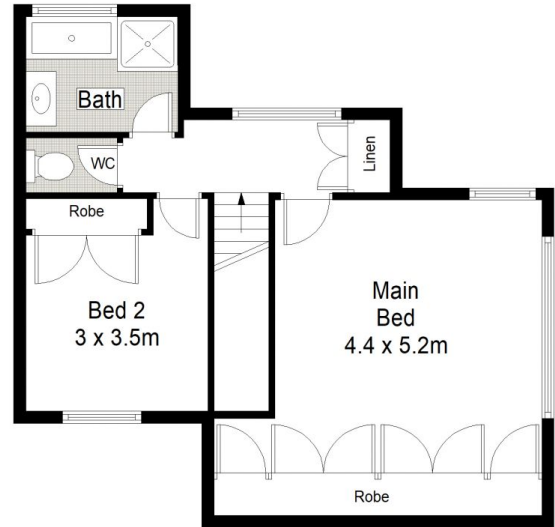


**Trent Jeffree**  
02 9540 2222

[For full version visit the website](https://www.jreproperty.com.au)



**GROUND FLOOR**



**FIRST FLOOR**

**JRE** PROPERTY



**5/641 Kingsway, Gympie**

This diagram is for illustrative purpose only. All reasonable care has been taken in the preparation, but no warranty is given as to the accuracy of the information. This document does not constitute any part of any offer or contract. Dimensions shown are approximate only. Prospective purchasers must rely on their own enquiries.