



17/34 Hotham Road Gymea NSW

2 2 2

Remarkable in its proportions, this desirable first-floor apartment provides a villa-like appeal ideal for those looking for an easy-care lifestyle with an abundance of space and entertaining area. Set back from the street in a popular security building, its lifestyle benefits are exceptional, offering peace and privacy and just a quick stroll to the rail and Gymea village.

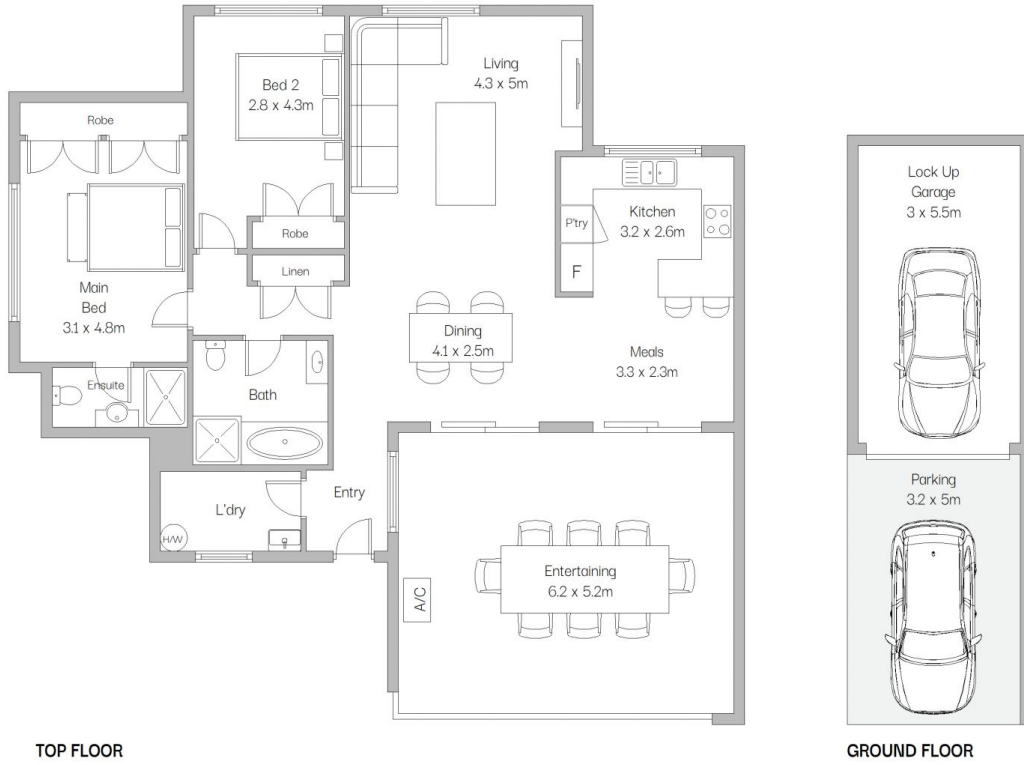
Type : Unit
Price : \$ 912,000
View : <https://www.jreproperty.com.au/sale/nsw/sutherland/gymea/residential/unit/7768253>

- ? Sweeping open-plan living and dining areas with timber flooring & A/C
- ? Neat kitchen, with dishwasher and breakfast bar
- ? Generous alfresco terrace with an ideal north-west aspect
- ? 2 generous bedrooms, master bed with ensuite both with wardrobes



Trent Jeffree
02 9540 2222

[For full version visit the website](https://www.jreproperty.com.au)



TOP FLOOR

GROUND FLOOR



17/34 Hotham Road, Gymea

Scale in metres. Indicative only. Dimensions are approximate. All information contained herein is gathered from sources we believe to be reliable. However we cannot guarantee its accuracy and interested persons should rely on their own enquiries.