



36 Gorada Avenue Kirrawee NSW

4 2 1

Displaying an elevated perspective with leafy district vistas this family home enjoys many extras. It features spacious living areas, a large inground pool, and a versatile lower-level with a bedroom, living area, and a small kitchenette. Situated in a quiet cul-de-sac location it's perfectly central to schools, Gynea Village, South Village, and transport.

- ? Spacious living areas with timber floors
- ? Original kitchen, overlooking backyard
- ? Alfresco balcony with private outlook
- ? Three bedrooms with built-in robes and fans
- ? One bedroom downstairs with self-contained living and small kitchen and bathroom
- ? Inground pool, level sunny grassed lawn
- ? Kirrawee High Catchment area
- ? Council Rates \$427.00 approx

Land Size : 562.7 sqm

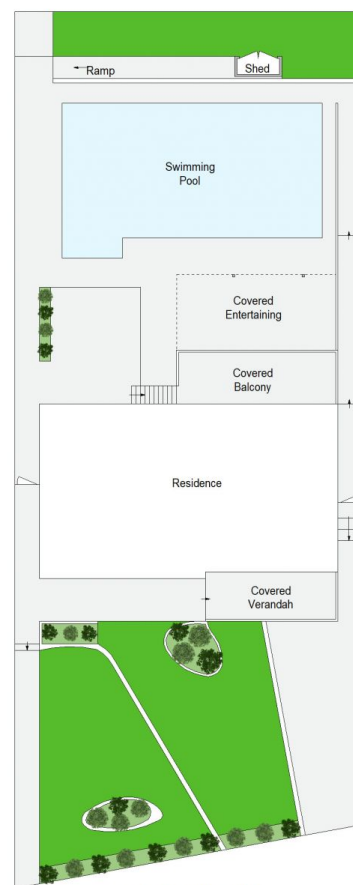
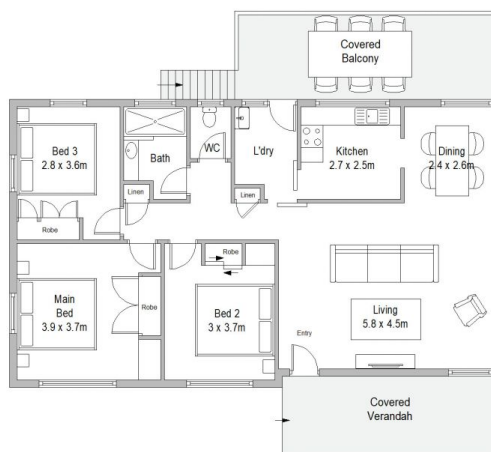
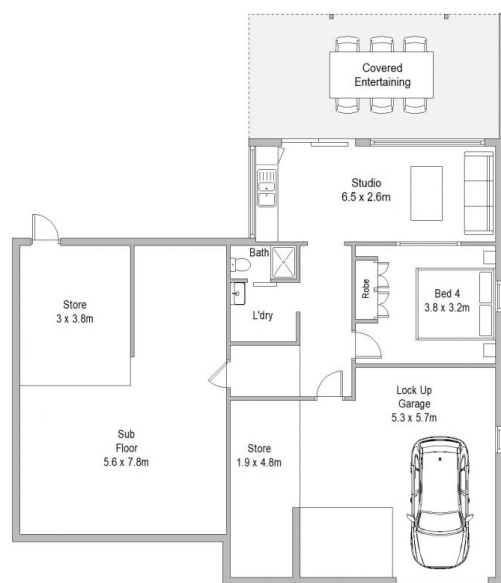
View : <https://www.jreproperty.com.au/sale/nsw/sutherland/kirrawee/residential/house/7798054>



Luke Jeffree
02 9540 2222



Belinda Sanders
02 9540 2222



36 Gorada Avenue, Kirrawee

Scale in metres. Indicative only. Dimensions are approximate. All information contained herein is gathered from sources we believe to be reliable. However we cannot guarantee its accuracy and interested persons should rely on their own enquiries.