



**9/351-353 President Avenue Gymea NSW**

2 1 2

Entry from Koorabel Ave, Gymea

Enjoy a lifestyle of convenient living within only minutes to the popular Gymea Village. Set back from President Ave, this North Facing top floor apartment resides within a well-maintained security complex.

Within terrific proximity to everything that popular Gymea village has to offer, including transport and café's

- ? Substantial and open-plan lounge and dining
- ? Two generously sized bedrooms, both with built-in wardrobes
- ? Kitchen with dishwasher and breakfast bar
- ? North Facing large entertainers balcony

**Type** : Unit  
**Price** : \$ 790,000  
**View** : <https://www.jreproperty.com.au/sale/nsw/sutherland/gymea/residential/unit/7806342>

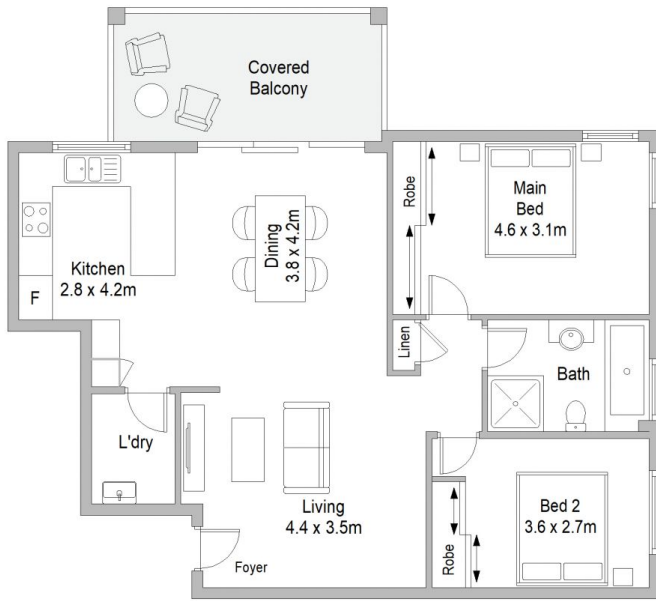


**Luke Jeffree**  
02 9540 2222

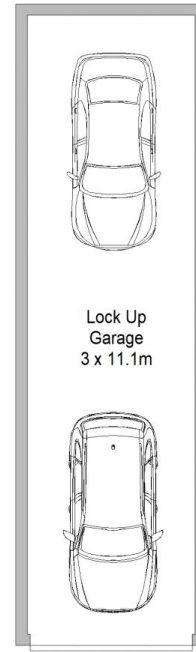


**Belinda Sanders**  
02 9540 2222

[For full version visit the website](https://www.jreproperty.com.au)



TOP FLOOR



LEVEL B1



9/351-353 President Avenue, Gympie

Scale in metres. Indicative only. Dimensions are approximate. All information contained herein is gathered from sources we believe to be reliable. However we cannot guarantee its accuracy and interested persons should rely on their own enquiries.