



## 19/42 Talara Road Gymea NSW

2 2 1

Expansively sized and stylishly appointed this 2nd floor apartment has substantial living areas that spill out to a peaceful & private alfresco balcony perfect for entertaining.

Promising premium comfort and delivering a cosmopolitan lifestyle with a short stroll to Gymea train station, schools and cafe's.

- ? Both bedrooms with wardrobes, master with ensuite
- ? Modern kitchen with stainless steel appliances & dishwasher
- ? Oversized open plan living and dining area
- ? Added convenience of an internal laundry w/ dryer
- ? Bonus of a single garage, balcony off bedrooms
- ? Well maintained security complex with lift access

**Type** : Apartment

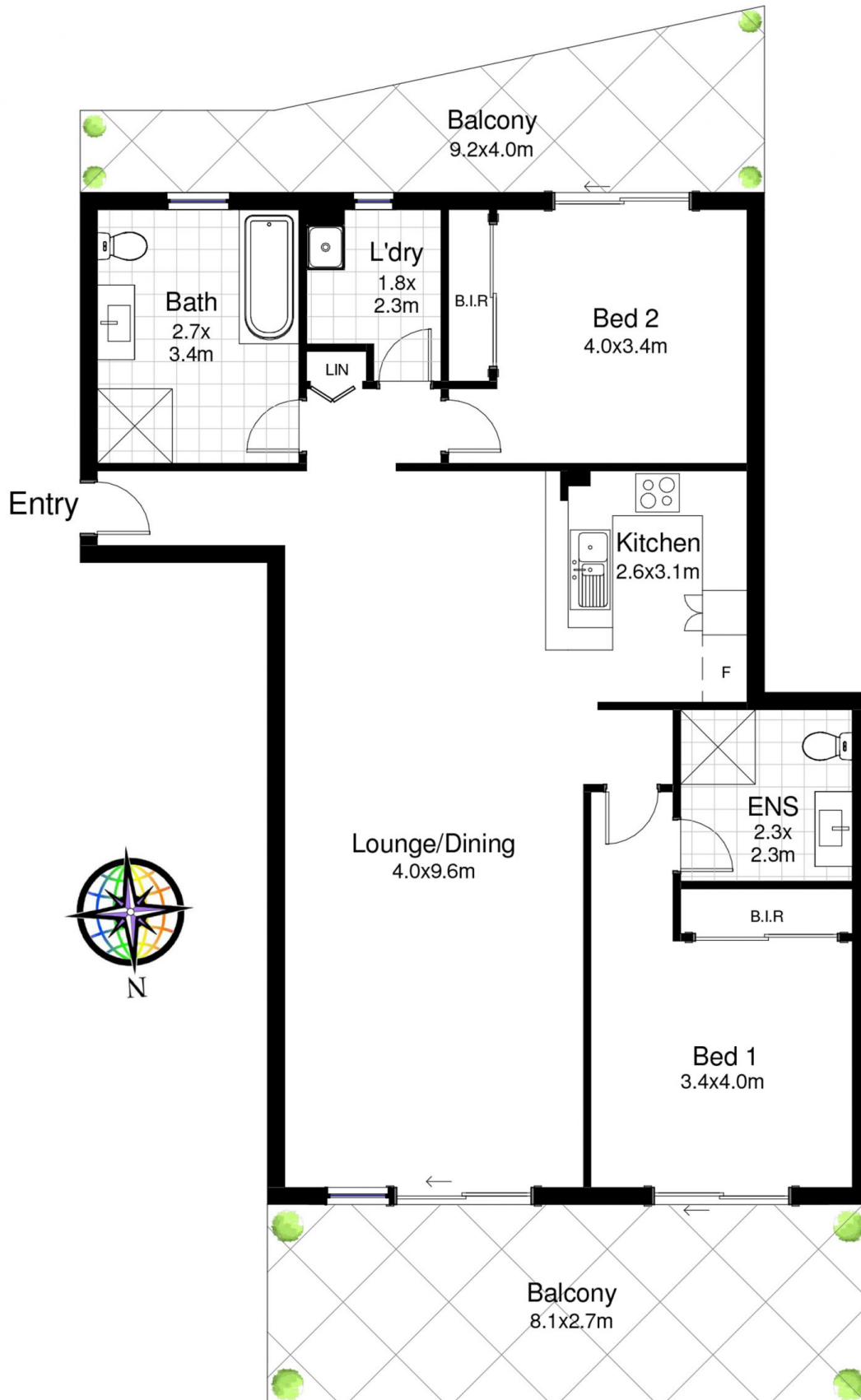
**Price** : \$ 905,000

**View** : <https://www.jreproperty.com.au/sale/nsw/sutherland/gymea/residential/apartment/7871420>



**Trent Jeffree**  
02 9540 2222

[For full version visit the website](https://www.jreproperty.com.au)



## 19/42 Talara Road, GyMEA

DISCLAIMER: This is for illustrative purposes only. All dimensions are approximate and it does not constitute part of any legal documents.