

**10/4-8 Madeira Street Sylvania NSW**

3 2 2

This luxurious three-bedroom villa promotes effortless indoor/outdoor living for year-round entertaining in an ideal locale. Perfectly positioned in an immaculate boutique complex with resort style amenities including stunning inground swimming pool, BBQ area, pontoon access and breathtaking northerly views of the Georges River and the City skyline. Only moments to Southgate Shopping Centre, it is perfect for those looking for convenient, low maintenance living.

**Featuring:**

- Master bedroom with walk in robe and ensuite and private courtyard
- Second and third bedroom with access to second private courtyard

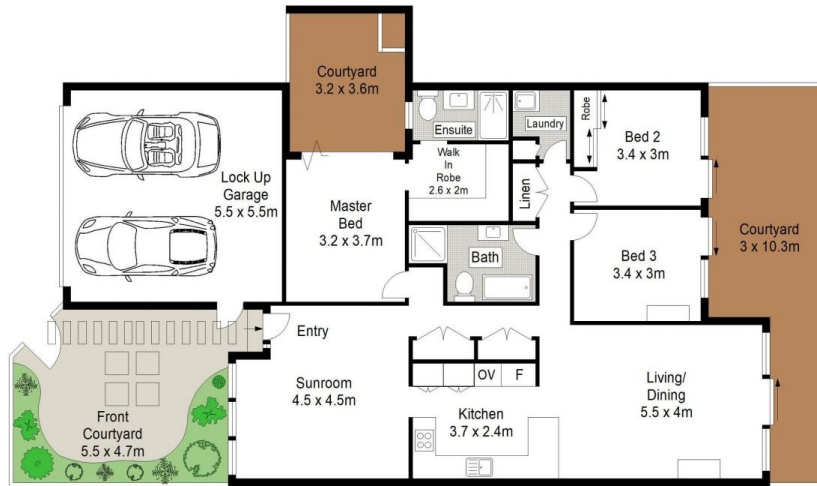
**Type** : House

**View** : <https://www.jreproperty.com.au/lease/nsw/sutherland/sylvania/residential/house/7945839>



**Natalie McHugh**  
02 9540 2222

[For full version visit the website](https://www.jreproperty.com.au)



GROUND FLOOR

0 1 2 3 4 5 SCALE IN METRES

Scale in metres. Indicative only. Dimensions are approximate. All information contained herein is gathered from sources we believe to be reliable. However we cannot guarantee its accuracy and interested persons should rely on their own enquiries.



10/4-8 Madeira Street, Sylvania

JRE PROPERTY