



2/745-747 Kingsway Gymea NSW

2 1 1

Nested in an exclusive small boutique strata complex of only 5 residences, this comfortable freestanding villa offers the epitome of low-maintenance living. Bathed in natural light, the spacious and maintained interiors create an inviting space for comfortable living. An expansive sun-drenched wrap-around terrace provides an ideal space for alfresco dining and outdoor enjoyment. Ideally located, with just a short stroll to vibrant Gymea Village, café's, and transport.

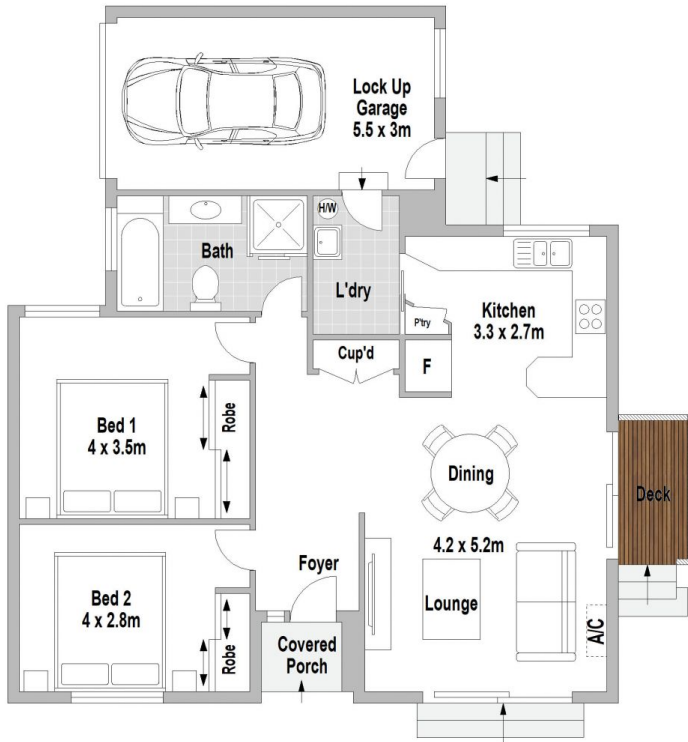
Type : Villa
Price : Auction
Building Size : 187 sqm
View : <https://www.jreproperty.com.au/sale/nsw/sutherland/gymea/residential/villa/8125346>

- ? Combined lounge and dining area with A/C
- ? Thoughtfully designed kitchen with d/washer and b/fast bar
- ? Two bedrooms, both feature built-in wardrobes
- ? Expansive and sunny wrap-around private courtyards

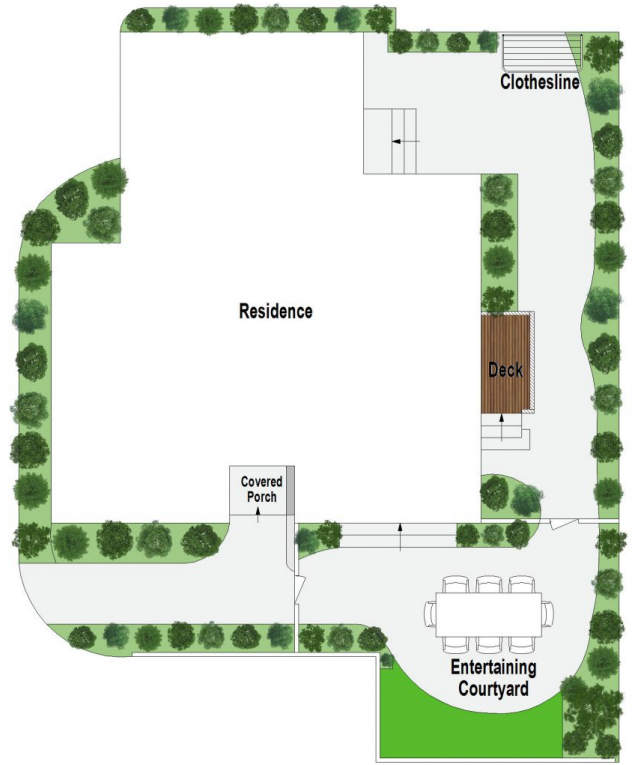
[For full version visit the website](#)



Trent Jeffree
02 9540 2222



GROUND FLOOR



SITE PLAN (NOT TO SCALE)

KINGSWAY



2/745 Kingsway, Gymea

Scale in metres. Indicative only. Dimensions are approximate. All information contained herein is gathered from sources we believe to be reliable. However we cannot guarantee its accuracy and interested persons should rely on their own enquiries.