



24 Conjola Place Gymea Bay NSW

3 2 2

Offered for the first time in over 50 years, this cherished and meticulously maintained residence is situated in a highly sought-after cul-de-sac, providing a peaceful and private setting.

Elevated to showcase stunning bushland views of the National Park, the property enjoys abundant natural light and features a level, sunlit backyard ideal for children and outdoor entertaining.

With the potential to further modernise and add value if desired, this home also presents an opportunity to move in and immediately enjoy its serene surroundings.

Type : House
Price : Auction
Land Size : 569.1 sqm
View : <https://www.jreproperty.com.au/sale/nsw/sutherland/gymea-bay/residential/house/81347>
 24



Luke Jeffree
02 9540 2222

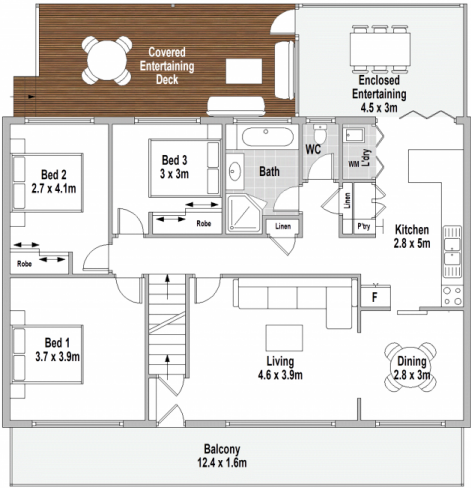


Belinda Sanders
02 9540 2222

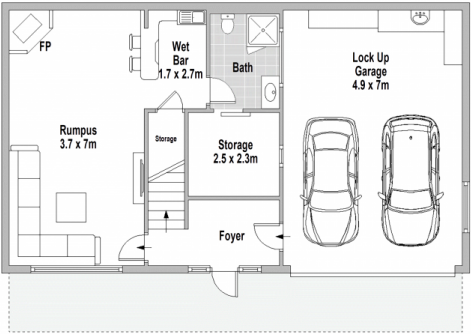
[For full version visit the website](https://www.jreproperty.com.au)



SITE PLAN (NOT TO SCALE)



GROUND FLOOR



LOWER GROUND FLOOR

24 Conjola Place, Gympie Bay



Scale in metres. Indicative only. Dimensions are approximate. All information contained herein is gathered from sources we believe to be reliable. However we cannot guarantee its accuracy and interested persons should rely on their own enquiries.