



### 340 President Avenue Gymea NSW

5 2 2

Discover this rare dual occupancy opportunity in the heart of Gymea, ideal for investors or multi-generational living. Perfect for savvy investors or families seeking flexibility and space.

With two well-maintained dwellings on the same block, this is a chance to secure a valuable asset in a highly sought-after location within walking distance to Gymea shops, cafés and transport.

**Front Dwelling :** A well-maintained three-bedroom home with polished timber flooring, off-street parking, and a grassed yard. Currently leased and providing instant rental income. Ideal for investors looking to start earning immediately or families wanting to rent out while residing in

[For full version visit the website](https://www.jreproperty.com.au)

**Type** : House  
**Price** : UNDER CONTRACT  
**Land Size** : 720.8 sqm  
**View** : <https://www.jreproperty.com.au/sale/nsw/sutherland/gymea/residential/house/8147840>

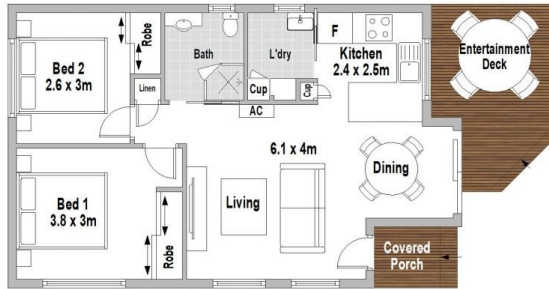


**Luke Jeffree**  
02 9540 2222

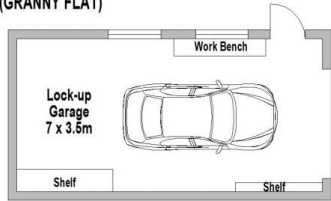


**Belinda Sanders**  
02 9540 2222

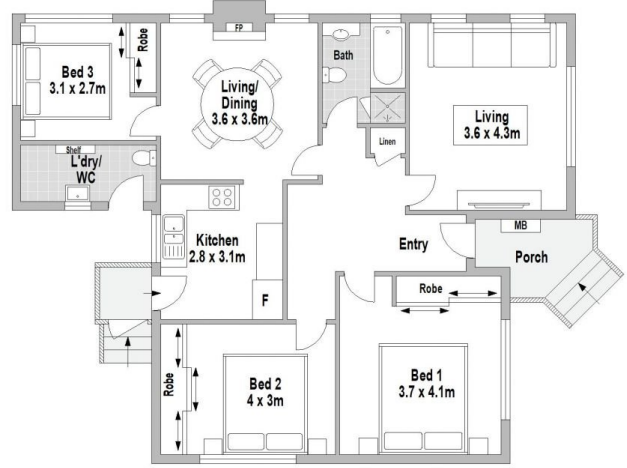




GROUND FLOOR  
(GRANNY FLAT)



SITE PLAN (NOT TO SCALE)



GROUND FLOOR  
(MAIN RESIDENCE)

340 President Avenue, Gympie



Scale in metres. Indicative only. Dimensions are approximate. All information contained herein is gathered from sources we believe to be reliable. However we cannot guarantee its accuracy and interested persons should rely on their own enquiries.